

INSIDE DOORS



WALL FIXING LUGS



DOOR LOCKS

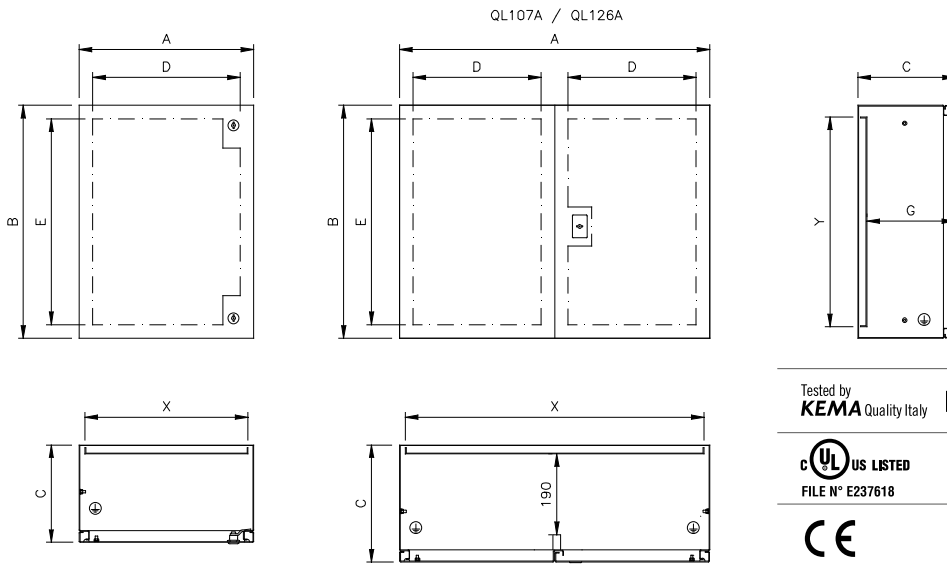


ANTI-CLOSE DEVICE



SMALL CABINETS QL

- Material: EN 1.4307 (TYPE 304L) or EN 1.4404 (TYPE 316L) s/s, finely satin-finished scotch brite and protected on 1 side.
- Enclosure obtained from a single sheet by multi-bend shaping of the enclosure front edge.
- Fairlead plate not provided.
- Full door.
- Doorlock with twin-comb mapping, standardized type $\varnothing 3$ for Low Tension, s/s outside.
- S/s inner hinges, 120° opening according to CEI EN 60204-1 recommendations.
- Maximum weight admissible on the door: 12 kg.
- Seal of foamed polyurethane or silicone.
- Inner plate of sendzimir EN 10142 galvanized sheet, secured to the bottom of the cabinet by s/s M8 threaded bolts delivered with the cabinet.
- Pre-arranged for earthing as per applicable regulations.
- Protection degree: IP66 and IP69K for one-door cabinets; IP65 for two-door cabinets.
- Back: prearranged with four inserts M6 for wall mount system.



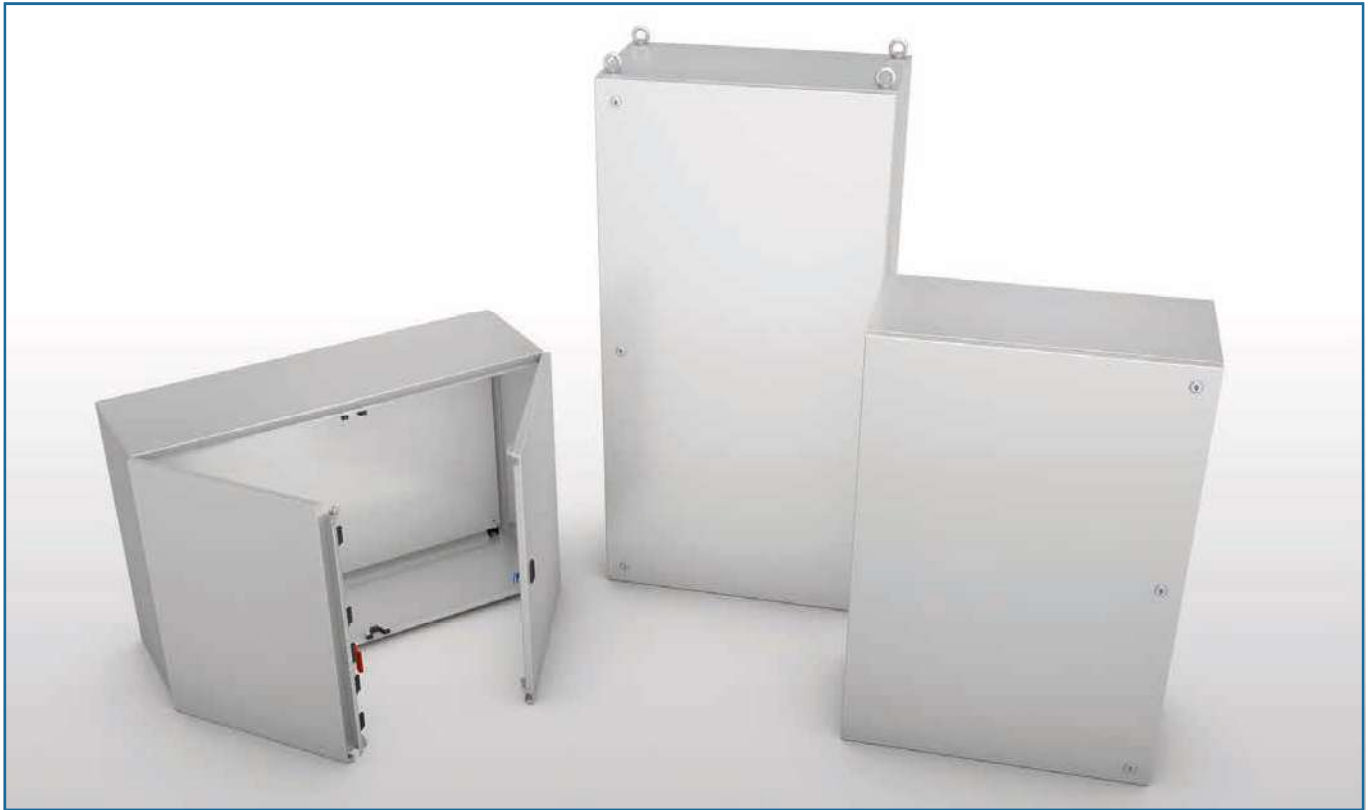
| | | | |
|--|------------------|---------------------|--|
| Tested by KEMA Quality Italy | IP69K | IP66 | EN 60 529 |
| UL US LISTED FILE N° E237618 | TYPE NEMA | 4X, 4, 12, 1 | Standard UL508A - UL50 Standard 250 |
| CE | IK10 | | EN 60204-1 89/392/EEC |

Detailed drawings per each cabinet can be downloaded from our site www.ilinox.com

| ITEM | OUTSIDE SIZES | | | DOOR USEFUL SURFACE | | USEFUL DEPTH | MATERIAL | | THICKNESS | | INNER PLATE | |
|------------|---------------|------|-----|---------------------|------|--------------|--------------|---------------|-----------|--------|-------------|------|
| | A | B | C | D | E | G | GASKET | SMALL CABINET | ENCLOSURE | DOOR | X | Y |
| QL23/304 | 200 | 300 | 150 | 130 | 230 | 130 | polyurethane | Type 304L | 1,2 mm | 1,5 mm | 170 | 240 |
| QL33/304 | 300 | 300 | 180 | 230 | 230 | 160 | polyurethane | Type 304L | 1,2 mm | 1,5 mm | 270 | 240 |
| QL34/304 | 300 | 450 | 200 | 230 | 380 | 180 | polyurethane | Type 304L | 1,2 mm | 1,5 mm | 270 | 390 |
| QL36/304 | 300 | 600 | 250 | 230 | 530 | 230 | polyurethane | Type 304L | 1,2 mm | 1,5 mm | 270 | 540 |
| QL43/304 | 450 | 300 | 200 | 380 | 230 | 180 | polyurethane | Type 304L | 1,2 mm | 1,5 mm | 420 | 240 |
| QL44/304 | 450 | 450 | 200 | 380 | 380 | 180 | polyurethane | Type 304L | 1,2 mm | 1,5 mm | 420 | 390 |
| QL46/304 | 450 | 600 | 250 | 380 | 530 | 230 | polyurethane | Type 304L | 1,2 mm | 1,5 mm | 420 | 540 |
| QL46P/304 | 450 | 600 | 400 | 380 | 530 | 380 | polyurethane | Type 304L | 1,5 mm | 1,5 mm | 420 | 540 |
| QL64/304 | 600 | 450 | 250 | 530 | 380 | 230 | polyurethane | Type 304L | 1,2 mm | 1,5 mm | 570 | 390 |
| QL66/304 | 600 | 600 | 250 | 530 | 530 | 230 | polyurethane | Type 304L | 1,2 mm | 1,5 mm | 570 | 540 |
| QL66P/304 | 600 | 600 | 300 | 530 | 530 | 280 | polyurethane | Type 304L | 1,2 mm | 1,5 mm | 570 | 540 |
| QL66P4/304 | 600 | 600 | 400 | 530 | 530 | 380 | polyurethane | Type 304L | 1,5 mm | 1,5 mm | 570 | 540 |
| QL67/304 | 600 | 750 | 250 | 530 | 680 | 230 | polyurethane | Type 304L | 1,5 mm | 2 mm | 570 | 690 |
| QL68P/304 | 600 | 800 | 400 | 530 | 730 | 380 | polyurethane | Type 304L | 1,5 mm | 2 mm | 570 | 740 |
| QL69/304 | 600 | 900 | 250 | 530 | 830 | 230 | polyurethane | Type 304L | 1,5 mm | 2 mm | 570 | 840 |
| QL77/304 | 750 | 750 | 300 | 680 | 680 | 280 | polyurethane | Type 304L | 1,5 mm | 2 mm | 720 | 690 |
| QL710/304 | 750 | 1000 | 300 | 680 | 930 | 280 | polyurethane | Type 304L | 1,5 mm | 2 mm | 720 | 940 |
| QL812/304 | 800 | 1200 | 320 | 600 | 1080 | 300 | polyurethane | Type 304L | 1,5 mm | 2 mm | 770 | 1140 |
| QL86/304 | 800 | 600 | 300 | 730 | 530 | 280 | polyurethane | Type 304L | 1,5 mm | 2 mm | 770 | 540 |
| QL106/304 | 1000 | 600 | 300 | 930 | 530 | 280 | polyurethane | Type 304L | 1,5 mm | 2 mm | 970 | 540 |
| QL107A/304 | 1000 | 750 | 300 | 430 | 680 | 280 | polyurethane | Type 304L | 1,5 mm | 2 mm | 970 | 690 |
| QL126A/304 | 1200 | 600 | 300 | 530 | 530 | 280 | polyurethane | Type 304L | 1,5 mm | 2 mm | 1170 | 540 |
| QL33S/316 | 300 | 300 | 180 | 230 | 230 | 160 | silicone | Type 316L | 1,5 mm | 1,5 mm | 270 | 240 |
| QL34S/316 | 300 | 450 | 200 | 230 | 380 | 180 | silicone | Type 316L | 1,5 mm | 1,5 mm | 270 | 390 |
| QL36S/316 | 300 | 600 | 250 | 230 | 530 | 230 | silicone | Type 316L | 1,5 mm | 1,5 mm | 270 | 540 |
| QL43S/316 | 450 | 300 | 200 | 380 | 230 | 180 | silicone | Type 316L | 1,5 mm | 1,5 mm | 420 | 240 |
| QL44S/316 | 450 | 450 | 200 | 380 | 380 | 180 | silicone | Type 316L | 1,5 mm | 1,5 mm | 420 | 390 |
| QL46S/316 | 450 | 600 | 250 | 380 | 530 | 230 | silicone | Type 316L | 1,5 mm | 1,5 mm | 420 | 540 |
| QL64S/316 | 600 | 450 | 250 | 530 | 380 | 230 | silicone | Type 316L | 1,5 mm | 1,5 mm | 570 | 390 |
| QL66S/316 | 600 | 600 | 250 | 530 | 530 | 230 | silicone | Type 316L | 1,5 mm | 1,5 mm | 570 | 540 |
| QL67S/316 | 600 | 750 | 250 | 530 | 680 | 230 | silicone | Type 316L | 1,5 mm | 2 mm | 570 | 690 |
| QL69S/316 | 600 | 900 | 250 | 530 | 830 | 230 | silicone | Type 316L | 1,5 mm | 2 mm | 570 | 840 |
| QL77S/316 | 750 | 750 | 300 | 680 | 680 | 280 | silicone | Type 316L | 1,5 mm | 2 mm | 720 | 690 |
| QL710S/316 | 750 | 1000 | 300 | 680 | 930 | 280 | silicone | Type 316L | 1,5 mm | 2 mm | 720 | 940 |

NOTE: QL33 - QL34 - QL43 : one only doorlock - QL812 : three doorlocks
QL107A/304 - QL126 : two doors without central upright

Protezione IK10 solo per armadietti porta singola
UL certification to be requested with the order



SKIRTING



PEDESTALS



OVERDOORS

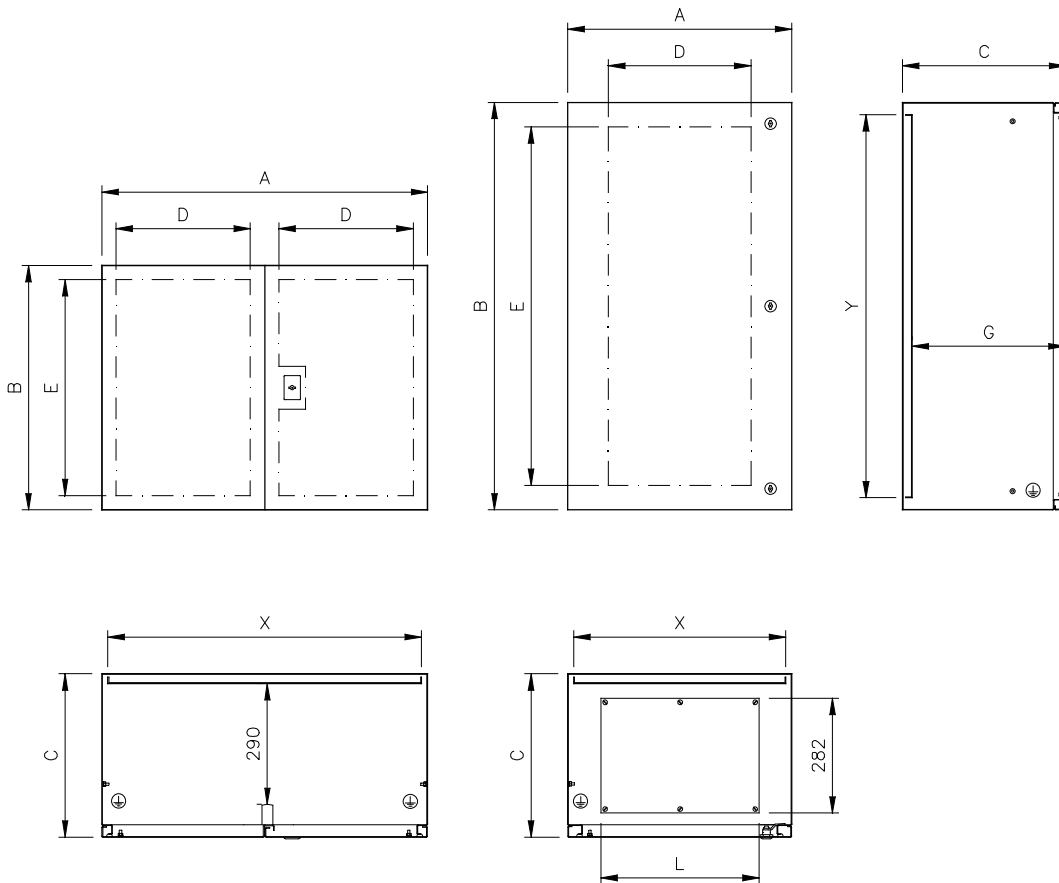


ANTI-CLOSE DEVICE



SMALL CABINETS QLP

- Material: EN 1.4307 (TYPE 304L) s/s, satin-finished scotch brite and protected on one side.
- Enclosure obtained from a single sheet, shaped by multi-bending of the envelope front edge.
- Fairlead plate with seal (only for cabinets H1200 - H1600).
- Reversible full door.
- Doorlock: twin-comb type standardized type, $\varnothing 3$ for Low Tension, s/s outside.
- S/s inner hinges: 120° opening as per CEI EN 60204-1 recommendations.
- Seals of foamed polyurethane.
- Inner plate made of sendzimir EN 10142 galvanized sheet secured to the bottom of the enclosure by M8 threaded pins delivered with the plate.
- Pre-arrangement for earthing as per applicable rules.
- Protection degree IP66 and IP69K for one-door cabinets, IP65 for two-door cabinets.
- Back: prearranged with four inserts M8 for wall mount system.



| | | | |
|--|------------------|---------------------|--|
| Tested by KEMA Quality Italy | IP69K | IP66 | EN 60 529 |
| UL US LISTED FILE N° E237618 | TYPE NEMA | 4X, 4, 12, 1 | Standard UL508A - UL50 Standard 250 |
| CE | IK10 | | EN 60204-1 89/392/EEC |

Detailed drawings per each cabinet can be downloaded from our site www.ilinox.com

| ITEM | OUTSIDE SIZES | | | DOOR USEFUL SURFACE | | USEFUL DEPTH | CABLE PASSAGE | THICKNESS | | | INNER PLATE | |
|---------|---------------|------|-----|---------------------|------|--------------|---------------|-----------|----------|------|-------------|------|
| | A | B | C | D | E | G | L | MATERIAL | ECLOSURE | DOOR | X | Y |
| QLP612 | 600 | 1200 | 400 | 500 | 1080 | 380 | 422 | Type 304L | 1,5 mm | 2 mm | 570 | 1140 |
| QLP616 | 605 | 1600 | 400 | 500 | 1480 | 372 | 422 | Type 304L | 1,5 mm | 2 mm | 523 | 1518 |
| QLP812 | 800 | 1200 | 400 | 600 | 1080 | 380 | 622 | Type 304L | 1,5 mm | 2 mm | 770 | 1140 |
| QLP814 | 800 | 1400 | 400 | 600 | 1280 | 380 | 622 | Type 304L | 1,5 mm | 2 mm | 770 | 1340 |
| QLP816 | 805 | 1600 | 400 | 600 | 1480 | 372 | 622 | Type 304L | 1,5 mm | 2 mm | 723 | 1518 |
| QLP128A | 1203 | 800 | 400 | 500 | 730 | 380 | | Type 304L | 1,5 mm | 2 mm | 1170 | 740 |
| QLP168A | 1603 | 800 | 400 | 690 | 710 | 372 | | Type 304L | 1,5 mm | 2 mm | 1522 | 722 |

QLP612 : three doorlocks, fairlead plate
 QLP616 - QLP 816 : three doorlocks, fairlead plate, hoisting eyebolts, inner plate adjustable on the depth
 QLP128A - QLP168A : two doors without central upright, can be certified UL TYPE 12

Protezione IK10 solo per ARMADIETTI PORTA SINGOLA
 UL certification to be requested with the order