



SKIRTING



DOOR LOCKS



ANTI-CLOSE DEVICE

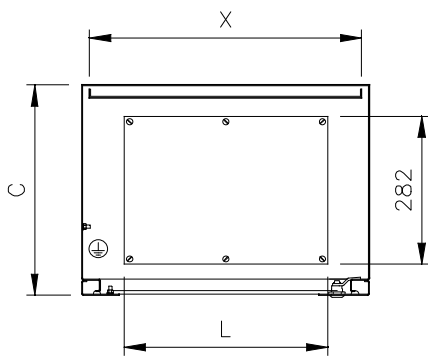
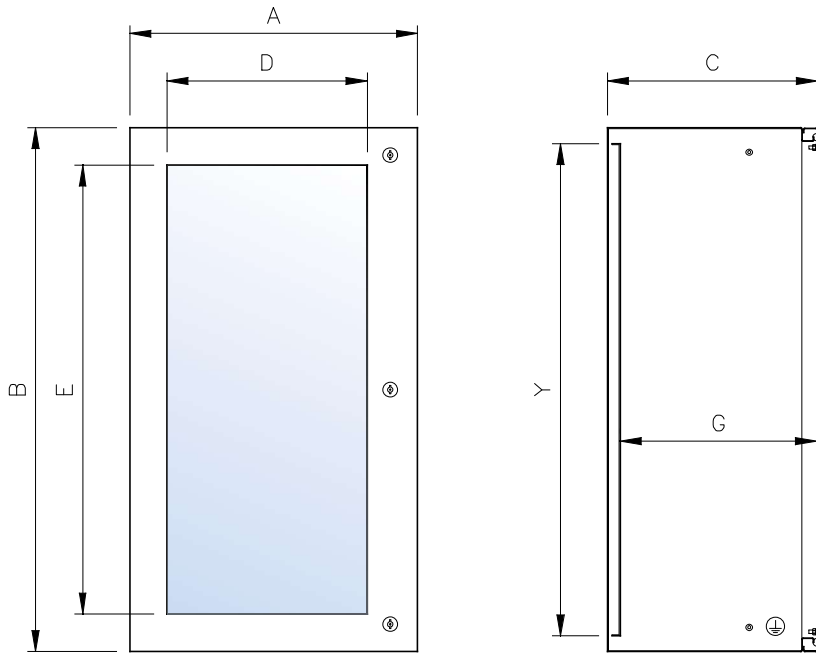


PEDESTALS



SMALL CABINETS QVP

- Material: EN 1.4307 (TYPE 304L) s/s, finely satin-finished and protected on one side.
- Enclosure obtained from a single sheet, shaped by multi-bending of the envelope front edge.
- Fairlead plate: with seal (only for cabinets H.1200 and H.1600).
- Reversible door with 3+3 shatterproof laminated glass (in compliance with the applicable accident prevention regulations).
- Door lock: twin-comb type, standardized type $\varnothing 3$ for Low Tension, with s/s outside.
- S/s inner hinges, 120° opening as per CEI EN 60204-1 recommendations.
- Seals of foamed polyurethane.
- Inner plate of sendzimir EN 10142 galvanized sheet secured to the bottom of the enclosure by threaded pins M8.
- Pre-arranged for earthing as per applicable regulations.
- Protection degree IP66 and IP69K.
- Back: prearranged with four inserts M8 for wall mount.



Tested by KEMA Quality Italy	IP69K	IP66	EN 60 529
UL US LISTED FILE N° E237618	TYPE NEMA	4X, 4, 12, 1	Standard UL508A - UL50 Standard 250
CE			EN 60204-1 89/392/EEC

Detailed drawings per each cabinet can be downloaded from our site www.ilinox.com

ITEM	OUTSIDE SIZES			DOOR VISIBLE		USEFUL DEPTH G	CABLE WAY L	THICKNESS			INNER PLATE	
	A	B	C	D	E			MATERIAL	ECLOSURE	DOOR	X	Y
QVP612	600	1200	400	450	1075	380	422	Type 304L	1,5 mm	2 mm	570	1140
QVP616	605	1600	400	440	1460	372	422	Type 304L	1,5 mm	2 mm	523	1518
QVP812	800	1200	400	650	1075	380	622	Type 304L	1,5 mm	2 mm	770	1140
QVP816	805	1600	400	640	1460	372	622	Type 304L	1,5 mm	2 mm	723	1518

QVP612 : three doorlocks, fairlead plate

QVP616 - QVP 816 : three doorlocks, fairlead plate, hoisting eyebolts, inner plate adjustable on the depth

UL certification to be requested with the order