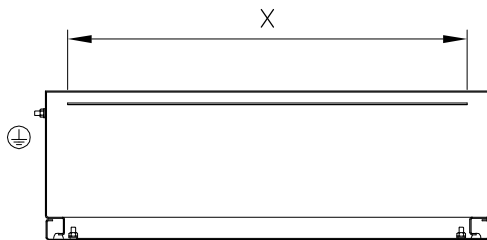
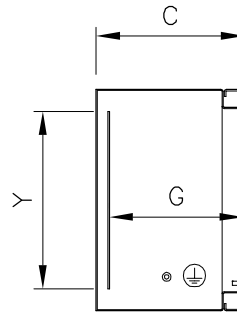
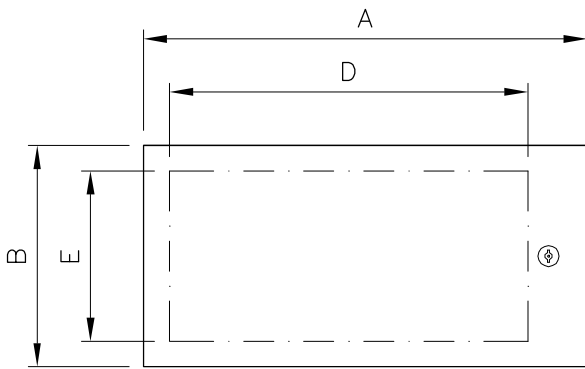



SMALL CABINETS SERIES QL - EX

- Material: stainless steel EN 1.4307 (TYPE 304L) or EN 1.4404 (TYPE 316L) scotch brite satin-finish and protection on one side.
- Enclosure obtained from a single sheet, shaped by multi-bending of the envelope front edge.
- Fairlead not included.
- Single full door.
- Locks: twin comb, standardized type Ø 3 for low voltage, s/s outer parts.
- S/s inner hinges: 120° opening as per CEI EN 60204-1 recommendations.
- Seal made of foamed polyurethane or silicone foam.
- The enclosure can be used under the following Maximum Temperatures on the outer surface: from -20°C to + 60°C with seal of bicomponent foamed polyurethane, from -40°C to + 180°C with seal of bicomponent silicone foam.
- Inner plate of EN 10142 sendzimir galvanized sheet, secured to the enclosure bottom by M8 threaded pins, delivered with the cabinet.
- Prearranged for earthing in compliance with the applicable regulations in force.
- Drillings, if any, to comply with the parameters indicated in the instruction manual.
- Protection degree: IP66 (CEI EN 60529).
- Certificates for areas 1 – 2 – 21 -22



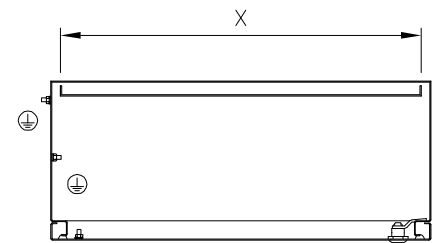
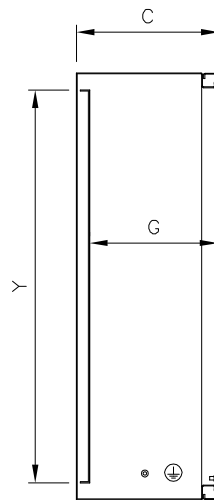
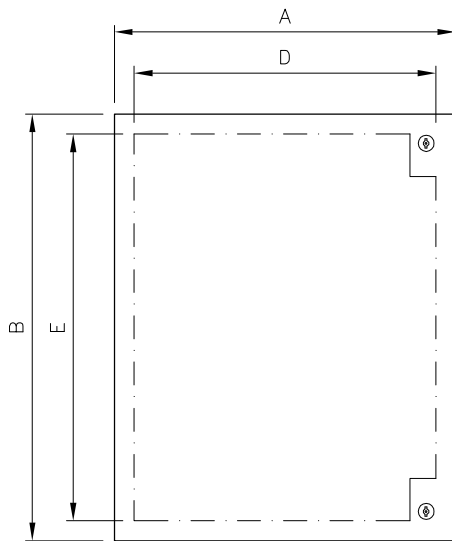
 II 2 GD IP66
 IECEx EUT 18.0016 U
 Ex eb IIC Gb
 Ex tb IIIC Db
 EPT 18 ATEX 3029 U
 NB: 0477

 US LISTED
 FILE N° E237618

Detailed drawings per each cabinet can be downloaded from our site www.ilinox.com

ITEM	OUTSIDE SIZES			DOOR USEFUL SURFACE		USEFUL DEPTH G	MATERIAL		THICKNESS		INNER PLATE	
	A	B	C	D	E		GASKET	CABINET	ECLOSURE	DOOR	X	Y
QL33/304-EX	300	300	180	230	230	160	polyurethane	Type 304L	1,2 mm	1,5 mm	270	240
QL34/304-EX	300	450	200	230	380	180	polyurethane	Type 304L	1,2 mm	1,5 mm	270	390
QL43/304-EX	450	300	200	380	230	180	polyurethane	Type 304L	1,2 mm	1,5 mm	420	240
QL33S/316-EX	300	300	180	230	230	160	silicone	Type 316L	1,5 mm	1,5 mm	270	240
QL34S/316-EX	300	450	200	230	380	180	silicone	Type 316L	1,5 mm	1,5 mm	270	390
QL43S/316-EX	450	300	200	380	230	180	silicone	Type 316L	1,5 mm	1,5 mm	420	240

UL certification to be requested with the order



Ex II 2 GD IP66

IECEX EUT 18.0016 U

Ex eb IIC Gb

Ex tb IIIC Db

EPT 18 ATEX 3029 U

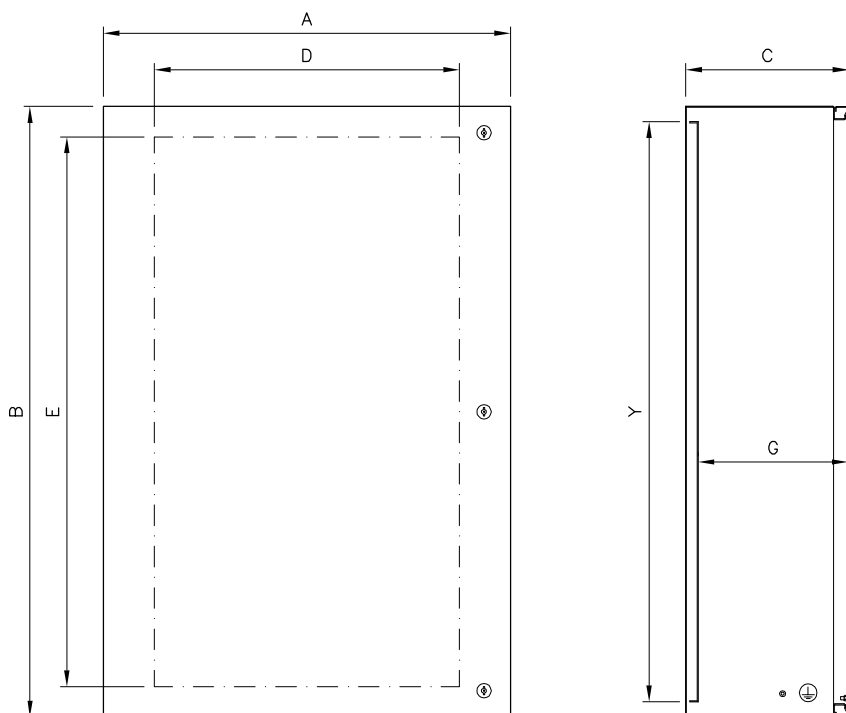
NB: 0477

UL US LISTED
FILE N° E237618

Detailed drawings per each cabinet can be downloaded from our site www.ilinox.com

ITEM	OUTSIDE SIZES			DOOR USEFUL SURFACE		USEFUL DEPTH G	MATERIAL		THICKNESS		INNER PLATE	
	A	B	C	D	E		GASKET	CABINET	ECLOSURE	DOOR	X	Y
QL36/304-EX	300	600	250	230	530	230	polyurethane	Type 304L	1,2 mm	1,5 mm	270	540
QL44/304-EX	450	450	200	380	380	180	polyurethane	Type 304L	1,2 mm	1,5 mm	420	390
QL46/304-EX	450	600	250	380	530	230	polyurethane	Type 304L	1,2 mm	1,5 mm	420	540
QL46P/304-EX	450	600	400	380	530	380	polyurethane	Type 304L	1,5 mm	1,5 mm	420	540
QL64/304-EX	600	450	250	530	380	230	polyurethane	Type 304L	1,2 mm	1,5 mm	570	390
QL66/304-EX	600	600	250	530	530	230	polyurethane	Type 304L	1,2 mm	1,5 mm	570	540
QL66P/304-EX	600	600	300	530	530	280	polyurethane	Type 304L	1,2 mm	1,5 mm	570	540
QL66P4/304-EX	600	600	400	530	530	380	polyurethane	Type 304L	1,5 mm	1,5 mm	570	540
QL67/304-EX	600	750	250	530	680	230	polyurethane	Type 304L	1,5 mm	2 mm	570	690
QL68P/304-EX	600	800	400	530	730	380	polyurethane	Type 304L	1,5 mm	2 mm	570	740
QL69/304-EX	600	900	250	530	830	230	polyurethane	Type 304L	1,5 mm	2 mm	570	840
QL77/304-EX	750	750	300	680	680	280	polyurethane	Type 304L	1,5 mm	2 mm	720	690
QL710/304-EX	750	1000	300	680	930	280	polyurethane	Type 304L	1,5 mm	2 mm	720	940
QL86/304-EX	800	600	300	730	530	280	poliuretano	Type 304L	1,5 mm	2 mm	770	540
QL36S/316-EX	300	600	250	230	530	230	silicone	Type 316L	1,5 mm	1,5 mm	270	540
QL44S/316-EX	450	450	200	380	380	180	silicone	Type 316L	1,5 mm	1,5 mm	420	390
QL46S/316-EX	450	600	250	380	530	230	silicone	Type 316L	1,5 mm	1,5 mm	420	540
QL64S/316-EX	600	450	250	530	380	230	silicone	Type 316L	1,5 mm	1,5 mm	570	390
QL66S/316-EX	600	600	250	530	530	230	silicone	Type 316L	1,5 mm	1,5 mm	570	540
QL67S/316-EX	600	750	250	530	680	230	silicone	Type 316L	1,5 mm	2 mm	570	690
QL69S/316-EX	600	900	250	530	830	230	silicone	Type 316L	1,5 mm	2 mm	570	840
QL77S/316-EX	750	750	300	680	680	280	silicone	Type 316L	1,5 mm	2 mm	720	690
QL710S/316-EX	750	1000	300	680	930	280	silicone	Type 316L	1,5 mm	2 mm	720	940

UL certification to be requested with the order



Ex II 2 GD IP66
 IECEx EUT 18.0016 U
 Ex eb IIC Gb
 Ex tb IIIC Db
 EPT 18 ATEX 3029 U
 NB: 0477

UL US LISTED
 FILE N° E237618

Detailed drawings per each cabinet can be downloaded from our site www.ilinox.com

ITEM	OUTSIDE SIZES			DOOR USEFUL SURFACE		USEFUL DEPTH G	MATERIAL		THICKNESS		INNER PLATE	
	A	B	C	D	E		GASKET	CABINET	ECLOSURE	DOOR	X	Y
QL812/304-EX	800	1200	320	600	1080	300	polyurethane	Type 304L	1,5 mm	2 mm	770	1140
QL812S/304-EX	800	1200	320	600	1080	300	silicone	Type 304L	1,5 mm	2 mm	770	1140

UL certification to be requested with the order