

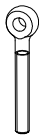
① Nut



Size		Strength class	Art. No.
M 6	DIN 439T2	A2-70	2600439090
M 8	DIN 439T2	04	2600439187
M 10	DIN 934	8	2600934092

Coating: Thick-layer passivated (M 8/M 10), RoHs-compliant

② Eye bolt



Size	Strength class	Art. No.
M 10 x 50	4.6	2600444076
M 6 x 50	4.6	2600444185
M 8 x 50	4.6	2600444186

Coating: Thick-layer passivated, RoHs-compliant

③ Cable eye stiffener

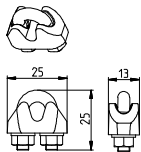


Size		Art. No.
D 2.5	to DIN 65457	2696899013
D 3	to DIN 65457	2696899014
D 4	to DIN 65457	2696899015
D 5	to DIN 6899B	2696899001

Material: Steel strip

Coating: Blue passivated, RoHs-compliant

④ Cable grip

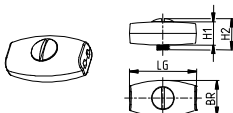


Size	Art. No.
D5	2690741002

Material: GTW/steel

Coating: Yellow chromated, RoHs-compliant

④ Cable grip, oval

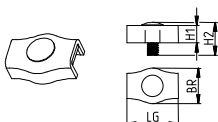


Size	LG	BR	H1	H2	Art. No.
2	28 mm	15 mm	11 mm	13 mm	2690000004
3	28 mm	15 mm	12 mm	13 mm	2690000005
4	34 mm	20 mm	14 mm	18 mm	2690000006

Material: Refined zinc cast alloy

Coating: Blue passivated, RoHs-compliant

④ Cable grip, simplex



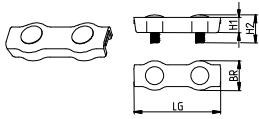
Size	LG	BR	H1	H2	Art. No.
2	15 mm	12 mm	5 mm	11 mm	2690000007
3	17 mm	14 mm	6 mm	14 mm	2690000008
4	20 mm	17 mm	7 mm	16 mm	2690000009

Material: Steel strip

Coating: Blue passivated, RoHs-compliant

Accessories for Rope Pull Switches

④ Cable grip, duplex



Size	LG	BR	H1	H2	Art. No.
2	35 mm	12 mm	5 mm	11 mm	2690000010
3	35 mm	14 mm	6 mm	14 mm	2690000011
4	40 mm	17 mm	7 mm	16 mm	2690000012

Material: Steel strip
Coating: Blue passivated, RoHS-compliant

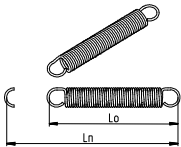
⑤ Cable



Cable Ø / Sheath Ø	Design	Minimum breaking strength	Art. No.
D 1,8/D 5	Similar to DIN 3055	275 kp	3699100008
D 2 / D 2.5	to DIN 3055	239 kp	3699100024
D 3 / D 4	to DIN 3055	538 kp	3699100025
D 4 / D 5	to DIN 3055	957 kp	3699100026

Material: Fibre-core galvanised, strength 1770 N/mm²
Coating: Blue passivated, RoHS-compliant

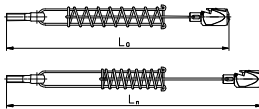
⑥ Compression spring, eye shape to DIN 1479



Fo	Fn	R	Lo	Ln	Art. No.
18 N	296 N	1.269 N/mm	188 mm	408 mm	3652100331
24 N	354 N	2.466 N/mm	180 mm	314 mm	3652100332
13.3 N	153 N	0.694 N/mm	185 mm	387 mm	3652100211
35.2 N	450 N	3.490 N/mm	201 mm	319 mm	3652100198

Material: Wire to DIN 2076 - 1.4310

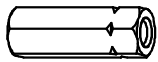
⑦ Pull cable spring



Fn	R	Lo	Ln	Art. No.
218 N	2.1 N/mm	383 mm	487 mm	3911042153
335 N	1.9 N/mm	483 mm	653 mm	3911042154

Material: Wire to DIN 2076 - 1.4310, cable grip - zinc pressure die-cast alloy, eye bolt to DIN 444 - 4.6
Coating: Thick-layer passivated (except spring), RoHS-compliant

⑦ Turnbuckle sleeve



Size	Art. No.
M 6	2601479188
M 8	2601479189

Material: Steel, min. tensile strength 330 N/mm²
Coating: Blue passivated, RoHS-compliant

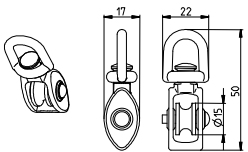
⑦ Turnbuckle similar to DIN 1480 with two eyes



Eyes	Art. No.
M 5 x 50	2691480016
M 6 x 60	2691480017

Material: Steel, forged
Coating: Blue passivated, RoHS-compliant

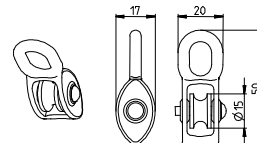
⑧ Pulley block, swivel version



Art. No.
2690000023

Material: Zinc pressure die-cast alloy (pulley polyamide)
Coating: Blue passivated, RoHS-compliant

⑧ Pulley block, fixed version



Art. No.
2690000022

Material: Zinc pressure die-cast alloy (pulley polyamide)
Coating: Blue passivated, RoHS-compliant

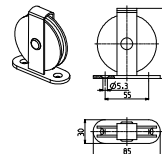
⑨ Mounting bracket for pulley to DIN 1142



Art. No.
3911751437

Material: Steel
Coating: Blue passivated, RoHS-compliant

Deflection pulley ø 75 mm for cable diameter up to 8 mm



Art. No.
2690000051

Material: Steel/polyamide
Coating: Blue passivated, RoHS-compliant