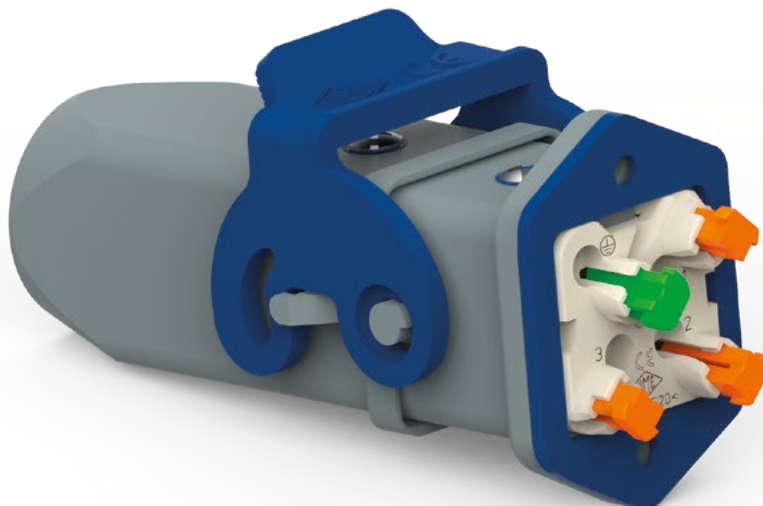

CKH - MKH HYGIENIC ENCLOSURES SIZE "21.21"



Made by thermoplastic insulating materials suitable for splash area, qualified for resistance to cleaning agents by ECOLAB and in compliance with EHEDG Guideline no. 32



Find more information on our products at www.ilme.com

TECHNICAL FEATURES

CKH - MKH HYGIENIC ENCLOSURES

The new series **CKH – MKH Hygienic** size “21.21” enclosures, completes the offer of hygienic connector enclosures of series T-Type Hygienic, by adding enclosures for the growing family of size “21.21” connector inserts, currently comprising the models listed in **Table 1** below (power, signal and data connectors, including fibre optics).

Table 1 – “21.21” connector inserts suitable for CKH-MKH Hygienic enclosures

CKF /M 03 /04 ●
CKSHF /M 03 /04 ●
CDF /M 07 ●
CDF /M 08 ●
CQF /M 05 ●
CQF /M 07 ●
CQF /M 12 ●
CQF /M 21 ●
CQ4F /M 03 ●
CQ4F /M 02 ●
CQ4F /M 02 H ●
CQ4F /M 03/2 ●
CX 1/2 BDF /M ○
CXL SF /SM, CXL 2/4 SF /SM, CXL 2/4 PF /PM, CXL 2/4 PFH /PMH, CXL PF /PM ○
CLK 04 SCF /SCF-H /SCM ○
CUK 2FT, CUK 3FT○
CJ KF /KM ○
CKJ 8M ○
CJK 8FT /8MT ○
CJK 8IFT, CJK 8BIFT, CJK 8PIFT, CJK 8 IMT ○
● The male insert of these models are provided with a standard sealing gasket. For hygienic applications with CKH – MKH hygienic enclosures this gasket must be replaced with the special hygienic gasket CR 21.21 GMH to be purchased separately.
○ The male inserts of these models are not provided with that sealing gasket on the male insert, hence for hygienic applications they are deemed to be used only in hygienic enclosures with glued hygienic gasket (identified by letter G in the first portion of their part no.).
<u>All inserts (male and female) need replacement of the standard screw or screw with gasket (according to models) with the corresponding hygienic screw with gasket kit CKRH 65 or CKRH 65 D (only inserts CD 07 and CD 08).</u>

The available models of CKH – MKH Hygienic enclosures are described in the following Table 2.

Table 2 – CKH – MKH Hygienic enclosures size “21.21”

Part no.	Description
CKH 03 I	bulkhead mounting housing
CKH 03 IA	angled bulkhead mounting housing
MKH IAP20	angled bulkhead mounting housing with M20 cable entry
MKH V20	hood with pegs, top entry M20
MKH V25	hood with pegs, top entry M25
MKH VA20	hood with pegs, side entry M20
MKH VG20	hood with lever, top entry M20
MKH VG25	hood with lever, top entry M25
CKH 03 C	cover with pegs and gasket, for female inserts (eyelet cord)
CKH 03 CS	cover with pegs and gasket, for female inserts (loop cord)
CKH 03 CA	cover with pegs, for male inserts (eyelet cord)
CKH 03 CAS	cover with pegs, for male inserts (loop cord)
CKH 03 CX	cover with lever and gasket, for female inserts (eyelet cord)
CKH 03 CXA	cover with lever, for male inserts (loop cord)
MKGH V20	hood with pegs and glued gasket, top entry M20
MKGH V25	hood with pegs and glued gasket, top entry M25
MKGH VA20	hood with pegs and glued gasket, angled entry M20

This new series offers three **bulkhead mounting housings** (the straight model and two angled models, one closed, the other with M20 side cable entry), five **hoods** differing by the size of cable entry (M20, M25) and either presence or absence of locking pegs or lever, e.g. for cable-to-cable joints, and the same **models with glued gasket** (letter G in the first portion of their part no.), for those inserts that by design do not include the sealing gasket on the male insert (models marked by ○ in the above table). The series is completed with all range of covers (6 models) matching the various applications.

All inserts need to be provided with the kit **CKRH 65** or **CKRH 65 D** (for CD 07 and CD 08 inserts), to be purchased separately: screw with food grade gasket (blue coloured). This kit must replace either the standard screw or screw with gasket provided with the insert.

The sealing gasket of those male inserts that include it (see Table 1, items marked with ●) has to be replaced with the special hygienic sealing gasket **CR 21.21 GMH**, blue coloured, for easier detection in case of loss in the food path, to be purchased separately.

- Series **CKH-MKH Hygienic** made (like T-Type Hygienic) by thermoplastic insulating materials compatible with the temperature range of standard hygienic applications and qualified for resistance to a wide set of cleaning agents by ECOLAB, and in compliance with the EHEDG Guideline no. 32. Same for the material of the locking lever and that of the sealing gaskets (flange, interface and under the head of fixing screw).

- Moving parts (locking lever) or parts that might be lost (sealing gaskets) blue coloured to be easily detectable by remote image detection systems.

- Locking lever detectable by metal detectors in case of accidental loss and fall inside the conveyor belt (food path).

- IP degree of protection: **IP66/IP67/IP69**.

- Upper and Lower Limiting Temperature (ULT – LLT): -40 °C ... +70 °C.

CKH - MKH production lines HYGIENIC SERIES

inserts

CK	3 and 4 poles + ⊕	58
CKS	3 and 4 poles + ⊕	-
CKSH	3 and 4 poles + ⊕	63
CD	7 poles + ⊕	66
CD4	8 poles + ⊕	67
CD4 H	2 poles + ⊕	182
CD4	2 poles + ⊕	183
CD4	3 poles + ⊕	184
CD4	3+2 (aux) poles + ⊕	16 *
CDQ	5 poles + ⊕	186
CDQ	7 poles + ⊕	187
CQ	12 poles + ⊕	189
CQ	21 poles	190

only for I (straight) housings
(if the counterpart has glued gasket):

CJ KF	223
CJK 8FT	226
CJK 8IFT	228
CUK 2FT, CUK 3FT	236
CLK 04 SC	239
CX 1/2 BD	243
CXL 2/4 SF, CXL 2/4 SM	250
CXL SF, CXL SM	250

refer to CN.19 pages
* refer to NEWS 2020 pages

pages:

bulkhead mounting housings



angled bulkhead mounting housings



FROM OCTOBER 2020

FROM OCTOBER 2020

description	part No.	part No.	part No. (entry M20)
with lever	CKH 03 I		
without cable entry, with lever 1)		CKH 03 IA	
with cable entry and lever 1)			MKH IAP20
gasket and screw kit for IP66/IP67/IP69 2)	CKRH 65	CKRH 65	
gasket and screw kit for IP66/IP67/IP69 2) specific for CD 07/08 inserts	CKRH 65 D	CKRH 65 D	

1) Not suitable for inserts:

- CQ4 2 poles + ⊕
- CQ4 H 2 poles + ⊕
- CQ4 3 poles + ⊕
- CQ4 3+2 (aux) poles + ⊕

2) To obtain the required IP66/IP67/IP69 degree of protection, a kit with insert fixing screw and gasket **must be purchased** separately to replaces the screw already provided with the inserts (even when it is already a fixing screw and gasket).

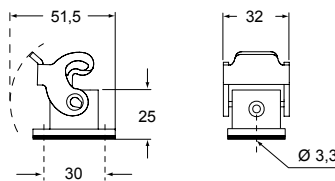
NOTE: Housing type may vary upon specific part No.



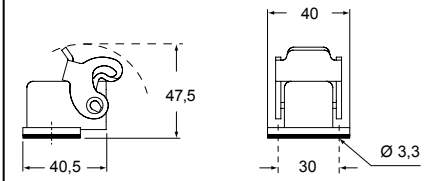
CR 21.21 GMH
HYGIENIC gasket for male inserts "21.21" size (page 114)



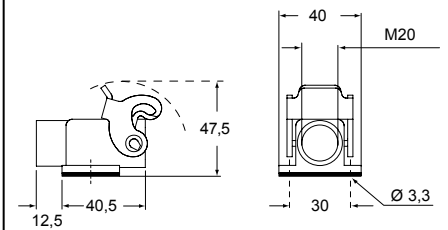
CKH I



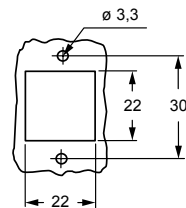
CKH IA



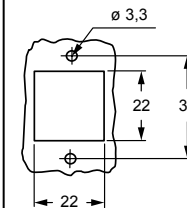
MKH IAP



panel cut-out for enclosures



panel cut-out for enclosures



cURus
Type 12
Type 4/4X only
with CKRH 65 (D) pending



IP44 IP66/IP67/IP69 with CKRH 65 (D) 1)

CKH - MKH production lines HYGIENIC SERIES

inserts

CK	3 poles + ⊕	58
CK	4 poles + ⊕	58
CKS	3 poles + ⊕	-
CKS	4 poles + ⊕	-
CKSH	3 poles + ⊕	63
CKSH	4 poles + ⊕	63
CD	7 poles + ⊕	66
CD	8 poles	67
CQ4M	2 poles + ⊕	182
CQ4M H	2 poles + ⊕	183
CQ4M	3 poles + ⊕	184
CQ4M	3+2 (aux) poles + ⊕	16 *
CQ	5 poles + ⊕	186
CQ	7 poles + ⊕	187
CQ	12 poles + ⊕	189
CQ	21 poles	190

refer to CN.19 pages

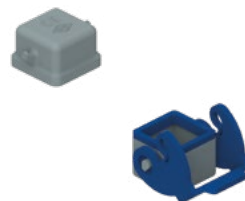
pages:

hoods



FROM OCTOBER 2020

covers



FROM OCTOBER 2020

description	part No. (entry M20)	part No. (with eyelet)	part No. (with loop)
with pegs, top entry 1)	MKH V20		
with pegs, side entry 1)	MKH VA20		
with lever, top entry 1)	MKH VG20		
with pegs and gasket, for female inserts		CKH 03 C	CKH 03 CS
with pegs, for male inserts		CKH 03 CA	CKH 03 CAS
with lever and gasket, for female inserts			CKH 03 CX
with lever, for male inserts			CKH 03 CXA
gasket and screw kit for IP66/IP67/IP69 2)	CKRH 65		
gasket and screw kit for IP66/IP67/IP69 2) specific for CD 07/08 inserts	CKRH 65 D		

1) **Not suitable for inserts:**

- **CQ4** 2 poles + ⊕
- **CQ4 H** 2 poles + ⊕
- **CQ4** 3 poles + ⊕
- **CQ4** 3+2 (aux) poles + ⊕

2) To obtain the required IP66/IP67/IP69 degree of protection, a kit with insert fixing screw and gasket **must be purchased** separately to replace the screw already provided with the inserts (even when it is already a fixing screw and gasket).

NOTE: Housing type may vary upon specific part No.



CR 21.21 GMH
HYGIENIC gasket
for male inserts
"21.21" size
(page 114)

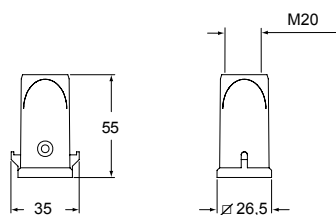


cURus
Type 12
Type 4/4X only
with CKRH 65 (D) pending

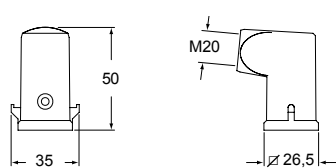


IP44 IP66/IP67/IP69 with CKRH 65 (D) 1)

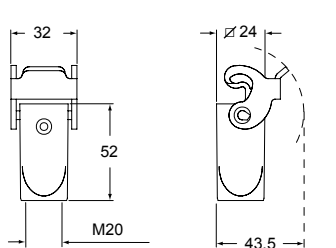
MKH V



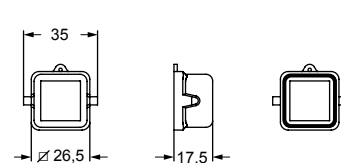
MKH VA



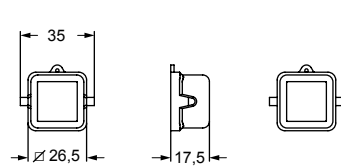
MKH VG



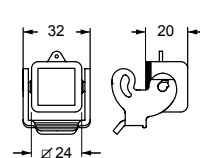
CKH C - CKH CS



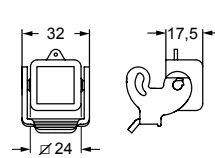
CKH CA - CKH CAS



CKH CX

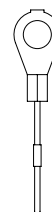


CKH CXA



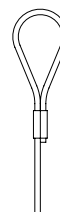
For fixing
on housings

eyelet



For fixing
on hoods

loop



MKH production lines HYGIENIC SERIES

inserts		pages:
CK	3 and 4 poles + ⊕	58
CKS	3 and 4 poles + ⊕	-
CKSH	3 and 4 poles + ⊕	63
CD	7 poles + ⊕	66
CD	8 poles	67
CQ4	2 poles + ⊕	182
CQ4 H	2 poles + ⊕	183
CQ4	3 poles + ⊕	184
CQ4	3+2 (aux) poles + ⊕	16 *
CQ	5 poles + ⊕	186
CQ	7 poles + ⊕	187
CQ	12 poles + ⊕	189
CQ	21 poles	190

hood



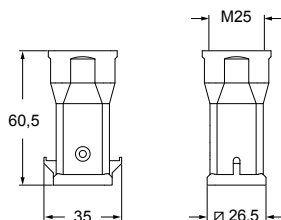
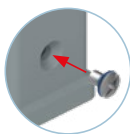
refer to CN.19 pages
* refer to NEWS 2020 pages

FROM OCTOBER 2020

description	part No. (entry M25)
with pegs, top entry	MKH V25
gasket and screw kit for IP66/IP67/IP69 1)	CKRH 65
gasket and screw kit for IP66/IP67/IP69 1) specific for CD 07/08 inserts	CKRH 65 D

1) To obtain the required IP66/IP67/IP69 degree of protection, a kit with insert fixing screw and gasket **must be purchased** separately to replaces the screw already provided with the inserts (even when it is already a fixing screw and gasket).

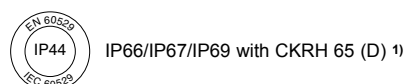
NOTE: Housing type may vary upon specific part No.



CR 21.21 GMH
HYGIENIC gasket
for male inserts
"21.21" size
(page 114)



cURus
Type 12
Type 4/4X only
with CKRH 65 (D) pending



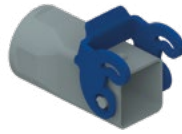
MKH production lines HYGIENIC SERIES

inserts

CK	3 and 4 poles + ⊕	58
CKS	3 and 4 poles + ⊕	-
CKSH	3 and 4 poles + ⊕	63
CD	7 poles + ⊕	66
CD	8 poles	67
CQ4	2 poles + ⊕	182
CQ4 H	2 poles + ⊕	183
CQ4	3 poles + ⊕	184
CQ4	3+2 (aux) poles + ⊕	16 *
CQ	5 poles + ⊕	186
CQ	7 poles + ⊕	187
CQ	12 poles + ⊕	189
CQ	21 poles	190
CLK 04 SC		239
CX 1/2 BD		243
CXL 2/4 PF, CXL 2/4 PFH		251
CXL 2/4 PM, CXL 2/4 PMH		251
CXL PF, CXL PM		251

pages:

hood



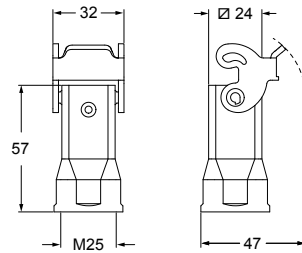
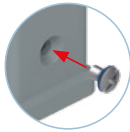
refer to CN.19 pages
* refer to NEWS 2020 pages

FROM OCTOBER 2020

description	part No. (entry M25)
with lever, top entry	MKH VG25
gasket and screw kit for IP66/IP67/IP69 1)	CKRH 65
gasket and screw kit for IP66/IP67/IP69 1) specific for CD 07/08 inserts	CKRH 65 D

1) To obtain the required IP66/IP67/IP69 degree of protection, a kit with insert fixing screw and gasket **must be purchased** separately to replaces the screw already provided with the inserts (even when it is already a fixing screw and gasket).

NOTE: Housing type may vary upon specific part No.



CR 21.21 GMH
HYGIENIC gasket
for male inserts
"21.21" size
(page 114)



cURus
Type 12
Type 4/4X only
with CKRH 65 (D) pending



IP66/IP67/IP69 with CKRH 65 (D) 1)

inserts

CJ KM	223
CJK 8MT	226
CJK 8IMT *	226, 228
CUK 2FT	236
CUK 3FT	236
CLK 04 SC *	239
CX 1/2 BD	243
CXL 2/4 PF	251
CXL 2/4 PFH	251
CXL 2/4 PM	251
CXL 2/4 PMH	251
CXL PF	251
CXL PM	251

* cannot be used with angled enclosures (part No. MKGH VA20)

refer to CN.19 pages

pages:

hood with glued gasket



FROM OCTOBER 2020

description

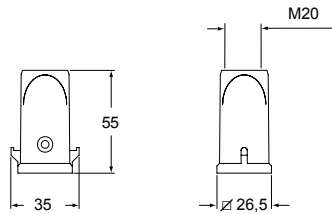
part No.
(entry M20)

with pegs and glued gasket, top entry
with pegs and glued gasket, side entry

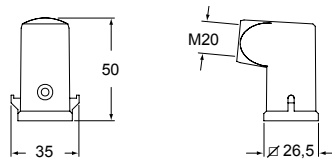
MKGH V20
MKGH VA20

▲ Suitable for DESINA® CXL inserts and male inserts without gasket.

MKGH V



MKGH VA



cURus
Type 4/4X/12
pending



inserts	pages:	
CQ4M 2 poles + ⊕		182
CQ4M H 2 poles + ⊕		183
CQ4M 3 poles + ⊕		184
CQ4M 3+2 (aux) poles + ⊕		16 *
CJ KM		223
CJK 8MT		226
CJK 8IMT	226, 228	233
CJK 8M		233
CUK 2FT, CUK 3FT		236
CLK 04 SC		239
CX 1/2 BD		243
CXL 2/4 PF, CXL 2/4 PFH		251
CXL 2/4 PM, CXL 2/4 PMH		251
CXL PF, CXL PM		251

refer to CN.19 pages
 * refer to NEWS 2020 pages

**hood
 with glued gasket**

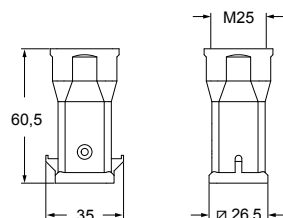


FROM OCTOBER 2020

description	part No. (entry M25)
-------------	-------------------------

with pegs, top entry **MKGH V25**

▲ Suitable for DESINA® CXL inserts and male inserts without gasket.



cURus
 Type 4/4X/12
 pending



inserts

CKM	3 and 4 poles + ⊕	58
CKSM	3 and 4 poles + ⊕	-
CKSHM	3 and 4 poles + ⊕	63
CDM	7 poles + ⊕	66
CDM	8 poles	67
CQ4M	2 poles + ⊕	182
CQ4M H	2 poles + ⊕	183
CQ4M	3 poles + ⊕	184
CQ4M	3+2 (aux) poles + ⊕	16 *
CQM	5 poles + ⊕	186
CQM	7 poles + ⊕	187
CQM	12 poles + ⊕	189
CQM	21 poles	190

pages:

HYGIENIC gasket for "21.21" male inserts



refer to CN.19 pages
* refer to NEWS 2020 pages

FROM OCTOBER 2020

description

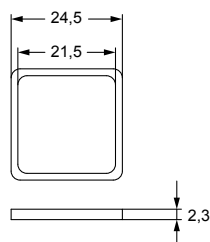
part No.

HYGIENIC gasket for male inserts "21.21" size

CR 21.21 GMH

! CAUTION:

This gasket must replace the standard gasket on the male insert, that foresees a gasket.



CKH - MKH HYGIENIC ENCLOSURES