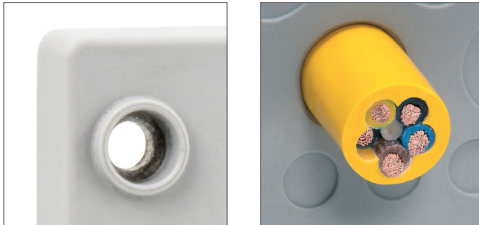


KEL-DPZ 6

Cable entry plates



IP66

| Description | Type | Order No. | Number of cables | PU |
|-------------|----------------|-----------|--|----|
| | KEL-DPZ 6 12 | 43809 | 12 x 4.5 - 8.0 mm | 10 |
| | KEL-DPZ 6 18-1 | 43811 | 7 x 4.5 - 8.0 mm 5 x 3.2 - 6.5 mm 6 x 2.5 - 5.0 mm | 10 |
| | KEL-DPZ 6 18 | 43812 | 18 x 3.2 - 6.5 mm | 10 |
| | KEL-DPZ 6 23 | 43813 | 10 x 3.2 - 6.5 mm 13 x 2.5 - 5.0 mm | 10 |
| | KEL-DPZ 6 27 | 43814 | 27 x 2.5 - 5.0 mm | 10 |

Product description

KEL-DPZ 6 entry plates are designed to route and seal a high number of cables without connectors or fibre optics (from 2.5 mm to 8 mm in diameter) in limited space.

The size KEL-DPZ 6 matches exactly the cut-out dimensions of 6-pin standard industrial connectors.

The assembly of the KEL-DPZ 6 with cables or pneumatic hoses can be done quick and easy. Simply make a small hole in the thin membrane, push the cables through. The KEL-DPZ 6 provides strain relief and protection up to IP66. ST-B Plugs can be used for sealing pierced membranes if cables have been removed.

Advantages & benefits

- Fast and easy assembly
- High cable density
- Dual sealing acc. to IP65/IP66
- Automatic sealing and strain relief for the cable
- Hygienic design

Specifications

| | |
|--------------------|--|
| Material | Frame: Stainless steel V2A Sealing plate: Elastomer |
| Colour | ■ grey (similar RAL 7035) |
| Flame class | UL94-Vo, self-extinguishing |
| IP rating | IP65/IP66 (certified acc. to EN 60529) |
| UL type rating | UL type 12 (acc. to UL 50E) |
| Temperature | - 40°C to + 100°C (static) |
| Properties | Halogen-free, silicone-free |
| Cut-out dimensions | 36 x 52 mm |
| Plate depth | 7,5 mm |

Accessories

| | |
|-----------------------------|-----------|
| ST-B Plugs | 93 |
| KEL-EMC-PF Cable collectors | 149 |
| FP Flanged plates | 194 - 203 |