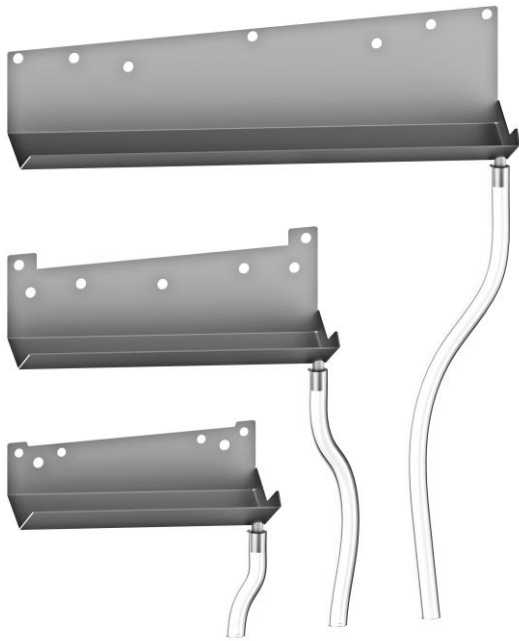


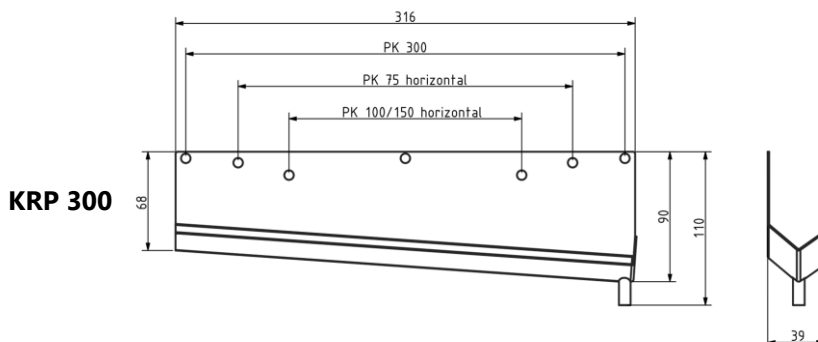
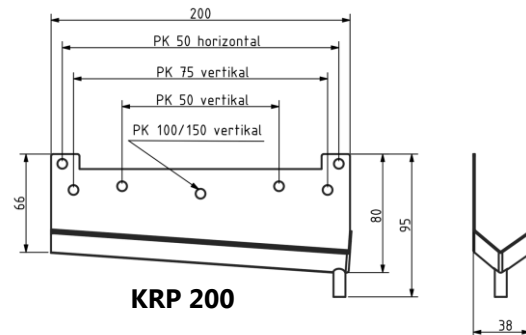
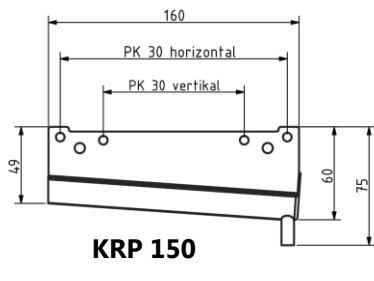
# [ Kondensatrinnen für Peltierkühlgeräte ]

[ Condensate through for thermoelectric coolers ]



- Passend für die Typen PK 30 - 300
- Zum Auffangen von Kondensat
- Material: Edelstahl, 1mm dick
- Mit Schlauchanschluss, ID = 8 mm
- Schlauch mit 2 mtr. Länge gehört zum Lieferumfang

- Suitable for the types PK 30 - 300
- Collecting of condensate
- Material: Stainless steel, thickness 1 mm
- With hose connection, ID = 8mm
- Hose with length 2 mtr. is included



Typ Type	Beschreibung Description	Artikel-Nr. Part no.
KRP 150	Edelstahl Kondensatrinne mit 2 mtr. Schlauch Stainless steel condensate through with 2 mtr. hose	49 KRP 150
KRP 200	Edelstahl Kondensatrinne mit 2 mtr. Schlauch Stainless steel condensate through with 2 mtr. hose	49 KRP 200
KRP 300	Edelstahl Kondensatrinne mit 2 mtr. Schlauch Stainless steel condensate through with 2 mtr. hose	49 KRP 300

**Anbau:**  
**Mounting**

<i>Kühlgerät Cooling unit</i>	<i>Einbaulage Mounting position</i>	<i>Passende Kondensatrinne Suitable condensate trough</i>
PK 30	horizontal / vertikal horizontal / vertical	KRP 150
PK 50	horizontal / vertikal horizontal / vertical	KRP 200
PK 75	vertikal vertical	KRP 200
PK 75	horizontal horizontal	KRP 300
PK 100/150	vertikal vertical	KRP 200
PK 100/150	horizontal horizontal	KRP 300
PK 300	horizontal / vertikal horizontal / vertical	KRP 300



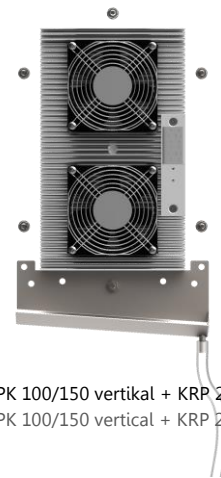
PK 50 vertikal + KRP 200  
PK 50 vertical + KRP 200



PK 75 horizontal + KRP 300  
PK 75 horizontal + KRP 300



PK 100/150 horizontal + KRP 300  
PK 100/150 horizontal + KRP 300



PK 100/150 vertikal + KRP 200  
PK 100/150 vertical + KRP 200

**Zubehör:**  
**Accessories:**

<i>Typ Type</i>	<i>Artikel-Nr. Part no.</i>
Kondensatablaufstutzen Edelstahl Condensate vent drain stainless steel	AVDR4SS4
Kondensatablaufstutzen Kunststoff Condensate vent drain plastic	AVDR4NM

