



Smooth rounded surfaces, designed for facilitate cleaning without grooves where filth might deposit and remain.



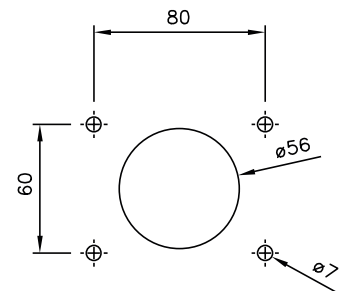
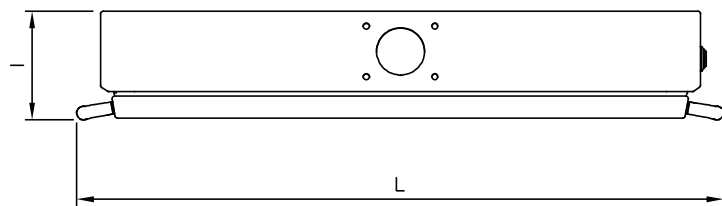
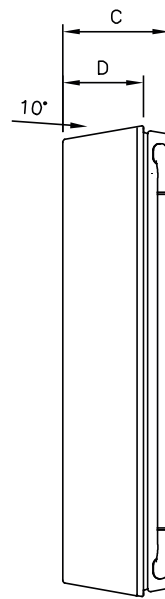
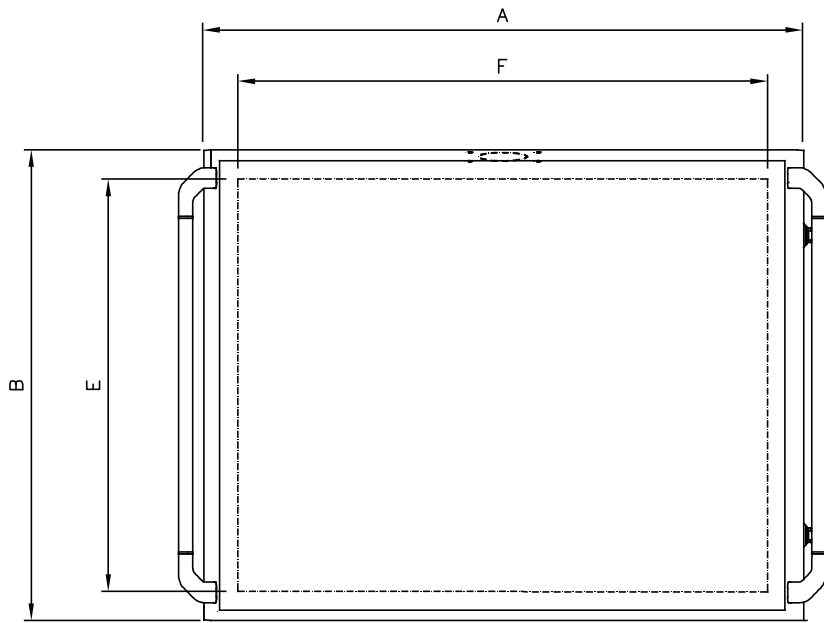
Smooth and finely satin round bended door complete of perimetral single piece silicon gasket.



The gasket, made of blue silicon to point out filth, can be removed and sanitized.

CONTROL BOX HYGIENIC SERIES BKH

- EN 1.4307 (TYPE 304L) s/s execution, finely satin-finished and protected.
- Enclosure obtained from a single sheet, thickness 15/10 shaped.
- Enclosures drilled for the assembling of articulated arms type TJ-TS-TL with rotary joint code GKSHA.
- 10° slope roof to facilitate cleaning and liquid drainage.
- Full door, hinged, side lock to take maximum advantage of the drilling space.
- Inner plate not provided.
- Ergonomic grip handles, TYPE 304 s/s.
- Inner hinges, s/s: 100° opening as per CEI EN 60204-1 recommendations.
- Seal removable, cleanable and sterilizable, made of moulded silicone.
- Prearranged for earthing according to the regulations in force.
- Protection degree IP66 and IP69K
- Doorlock without recesses and/or gaps; outside surfaces made of EN 1.4404 (TYPE 316L) s/s, shaped as per sanitary regulations DIN EN 1672-2 and DIN EN 14159; opening by removable key, zama execution.
- Box compatible with joint GKSHA.



IK10 IP66 IP69K

EN 60 529



TYPE NEMA 4X, 12, 1, 4

Standard UL508A - UL50 Standard 250



EN 60204-1 89/392/EEC

Low voltage directive 2014-35-UE

ITEM	OUTSIDE SIZES			USEFUL SURFACE			OVERALL DIM. WITH HANDLES	
	A	B	C	D	E	F	I	L
BKH43A/304L	450	350	125	94	281	368	127	505
BKH54A/304L	550	450	125	94	381	468	127	605
BKH65A/304L	600	500	125	94	431	518	127	655
BKH75A/304L	700	550	125	94	481	618	127	755

UL certification to be requested with the order