



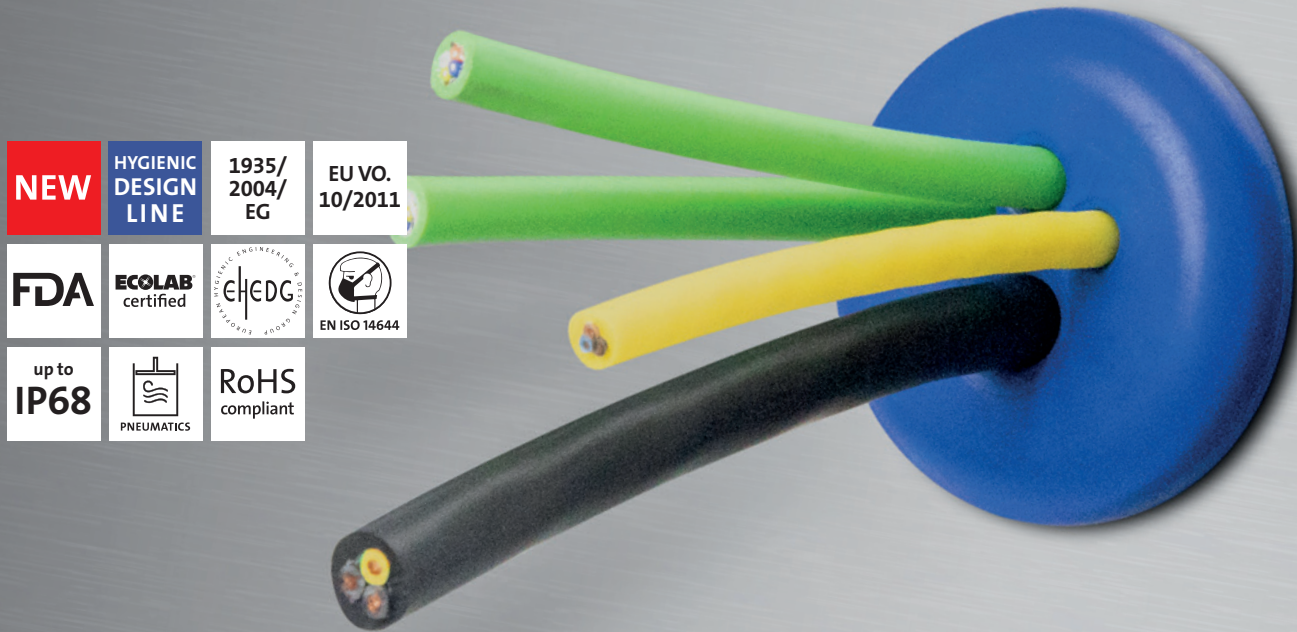
Hygienic Design Line

Food & Beverage Cable Entry Plates

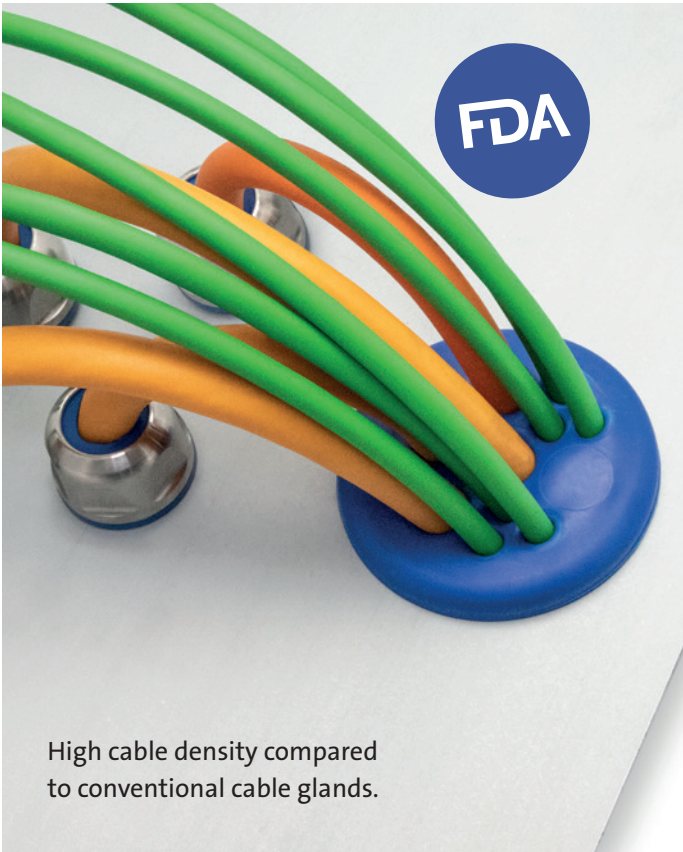
Cable Entry Plates

for Food & Beverage

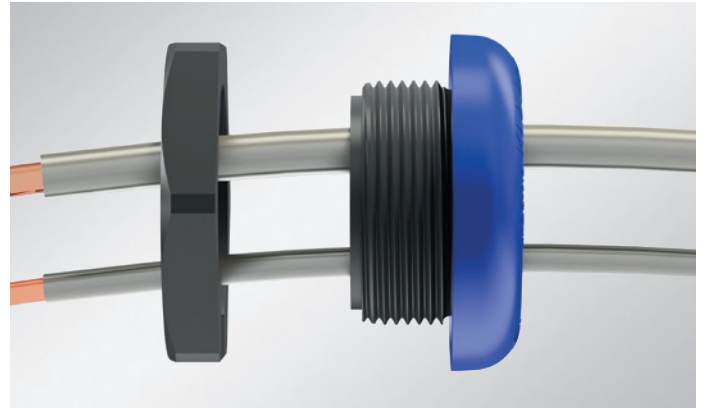
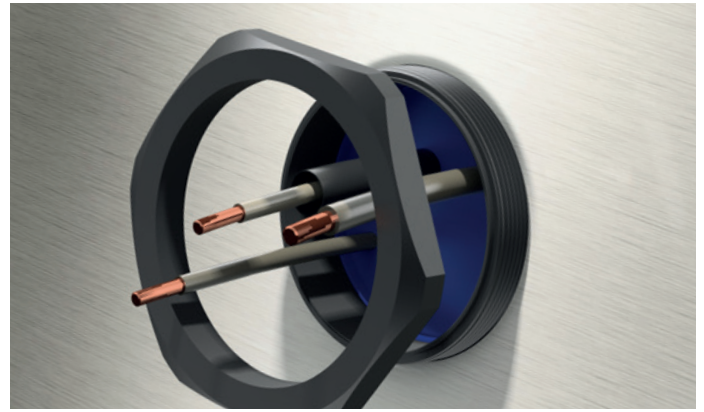
The new cable entry plates KEL-DPZ-HD with metric thread from M32 to M63 have been developed for installation in food processing and packaging machines.



- ✓ Elastomer of the cable entry plate made of material according to 1935/2004/EG , (EU) 10/2011
- ✓ FDA compliant
- ✓ EHEDG compliant
- ✓ Hygienic design – free of dirt-collecting recesses
- ✓ Smooth surface (roughness Ra 0.421 µm)
- ✓ Ecolab certified
- ✓ Very flat design
- ✓ Very smooth surface
- ✓ Very fast assembly
- ✓ Cable diameter 3,2 – 22,2 mm
- ✓ Very large sealing areas and clamping areas
- ✓ High cable density
- ✓ Dual sealing of cables (IP66/IP68)
- ✓ Suitable for metric cut-outs
- ✓ Reproducible cleaning process
- ✓ Very low moisture absorption
- ✓ High resistance to aromatic solvents, oils, greases, mineral products
- ✓ No corrosion possible because plastics have been processed
- ✓ Maintenance free

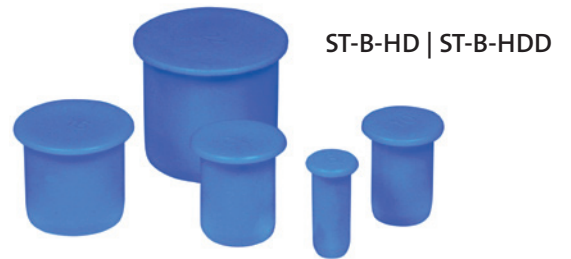


High cable density compared to conventional cable glands.



Plugs for cable entry plates

- ✓ Sealing of pierced cable entry membranes which are no longer in use
- ✓ Blue colour for clear visual recognition
- ✓ ST-B-HDD: Detectable using metal detectors X-ray devices
- ✓ High resistance to aromatic solvents, oils, greases, mineral products

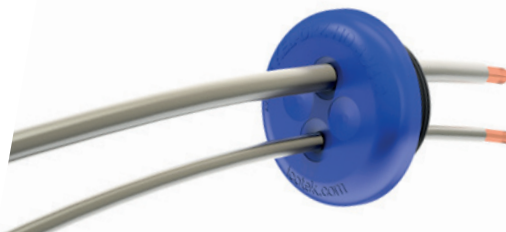


Cable Entry Plates for Food & Beverage

- ✓ Cable ties: High resistance to aromatic solvents, oils, greases, mineral products
- ✓ Blue colour for clear visual recognition
- ✓ Detectable using metal detectors X-ray devices
- ✓ Support in quality assurance within food production, for example within the framework of HACCP



„Hygienic Design“ products



Type	Order No.	Number of cables	Thread	Thread length	External diameter	Height	PU
KEL-DPZ-HD 32 4	70351	3× 3.2 - 6.5 mm 1× 7.2 - 12.5 mm	M32 × 1.5	14 mm	44 mm	8 mm	5
KEL-DPZ-HD 32 4-2	70352	4× 5 - 9.5 mm	M32 × 1.5	14 mm	44 mm	8 mm	5
KEL-DPZ-HD 32 7	70353	7× 3.2 - 6.5 mm	M32 × 1.5	14 mm	44 mm	8 mm	5
KEL-DPZ-HD 40 8	70354	4× 3.2 - 6.5 mm 4× 5 - 10.2 mm	M40 × 1.5	14 mm	52 mm	8 mm	5
KEL-DPZ-HD 50 8	70355	5× 5 - 10.2 mm 3× 7.2 - 12.5 mm	M50 × 1.5	14 mm	62 mm	8 mm	5
KEL-DPZ-HD 50 10	70356	7× 3.2 - 6.5 mm 2× 5 - 10.2 mm 1× 16 - 22.2 mm	M50 × 1.5	14 mm	62 mm	8 mm	5
KEL-DPZ-HD 50 12	70357	4× 3.2 - 6.5 mm 8× 5 - 10.2 mm	M50 × 1.5	14 mm	62 mm	8 mm	5
KEL-DPZ-HD 50 19	70358	19× 3.2 - 6.5 mm	M50 × 1.5	14 mm	62 mm	8 mm	5
KEL-DPZ-HD 63 9	70359	1× 3.2 - 6.5 mm 3× 5 - 10.2 mm 4× 9 - 16.2 mm 1× 16 - 22.2 mm	M63 × 1.5	14 mm	75 mm	8 mm	5
KEL-DPZ-HD 63 13	70360	4× 3.2 - 6.5 mm 4× 5 - 10.2 mm 5× 9 - 16.2 mm	M63 × 1.5	14 mm	75 mm	8 mm	5
KEL-DPZ-HD 63 14	70361	14× 5 - 10.2 mm	M63 × 1.5	14 mm	75 mm	8 mm	5
KEL-DPZ-HD 63 35	70362	35× 3.2 - 6.5 mm	M63 × 1.5	14 mm	75 mm	8 mm	5



Type	Order No.	Diameter (D1)	Diameter (D2)	Length	PU
ST-B-HD 6	70500	8 mm	6 mm	16 mm	10
ST-B-HD 10	70501	12 mm	10 mm	16 mm	10
ST-B-HD 12	70502	15 mm	12 mm	16 mm	10
ST-B-HD 16	70503	19 mm	16 mm	16 mm	10
ST-B-HD 22	70504	25 mm	22 mm	21 mm	10
ST-B-HDD 6 detectable	70620	8 mm	6 mm	16 mm	10
ST-B-HDD 10 detectable	70621	12 mm	10 mm	16 mm	10
ST-B-HDD 12 detectable	70622	15 mm	12 mm	16 mm	10
ST-B-HDD 16 detectable	70623	19 mm	16 mm	16 mm	10
ST-B-HDD 22 detectable	70624	25 mm	22 mm	21 mm	10



Type	Order No.	Length	Width	PU
Detectable cable ties KB 2.5 x 100 HDD	70680	100 mm	2.5 mm	100
Detectable cable ties KB 3.6 x 150 HDD	70681	150 mm	3.6 mm	100
Detectable cable ties KB 4.8 x 200 HDD	70682	200 mm	4.8 mm	100
Detectable cable ties KB 4.8 x 300 HDD	70683	300 mm	4.8 mm	100
Detectable holder for cable ties KBH 27 x 27 HDD	70710	27 mm	27 mm	100