

USB / RJ45 ports with flat stylish design

New product addition for the flush silhouette switches



USB2.0

RJ45

Flush silhouette

Flush bezel projects only 2mm from the front of the panel. Ideal for applications where a safe and hygienic surface is required.

Cable attached

Plastic encapsulated structure of the rear part prevents the cable from falling off. (USB port only)

Accessories with IP65/67 protection

Rubber and transparent plastic covers available. Water- and dust-proof.

Specification / Performance



USB2.0

| Part No. | CW1X-USB20-1M | CW4X-USB20-1M |
|---|---|---------------|
| Connector standard | USB2.0 compliant | |
| Operating temperature | -25 to +70°C (no freezing) | |
| Storage temperature | -25 to +70°C (no freezing) | |
| Storage temperature (when packaged) | -10 to +50°C (no freezing) | |
| Relative humidity | 0 to 90%RH (Max) (no condensation) | |
| Connecting cycles | 1,500 times | |
| Connecting force | 35N max. | |
| Removal force | 10N min. | |
| Locking screw recommended tightening torque | 1.2 to 1.5 N·m | |
| Bezel material | PBT | |
| Cable | AWG28, USB2.0, Standard cable, PVC shield (black) | |
| Protection degree | IP20 IP65/67 (accessory attached) | |

RJ45

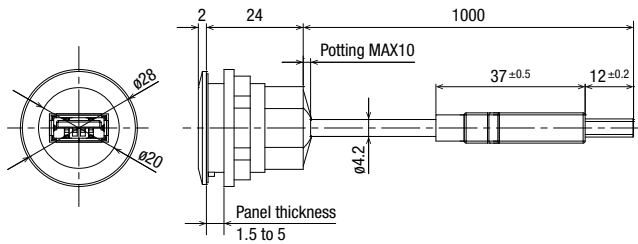
| Part No. | CW1X-RJ45 | CW4X-RJ45 |
|---|---|-----------|
| No. of contacts | 8 pin | |
| Operating temperature | -25 to +70°C (no freezing) | |
| Storage temperature | -25 to +70°C (no freezing) | |
| Storage temperature (when packaged) | -10 to +50°C (no freezing) | |
| Relative humidity | 0 to 90%RH (Max) (no condensation) | |
| Connecting cycles | 750 times | |
| Transmission performance | ISO/IEC 11 801: 2002 EN 50 173-1: Cat.6 Class EA 10/100 Gbit Ethernet 1/10 Gbit Ethernet | |
| Locking screw recommended tightening torque | 1.2 to 1.5 N·m | |
| Bezel material | PBT | |
| Protection degree | IP20 IP65/67 (accessory attached) | |

Ports



| Shape | Bezel color | Part No. | Remarks |
|---|-------------|----------------------|------------------------|
|  | Black | CW1X-USB20-1M | Cable length: 1m |
| | Metallic | CW4X-USB20-1M | USB2.0 TypeA |
|  | Black | CW1X-RJ45 | No. of contacts: 8 pin |
| | Metallic | CW4X-RJ45 | |

Dimensions

USB2.0



Accessories

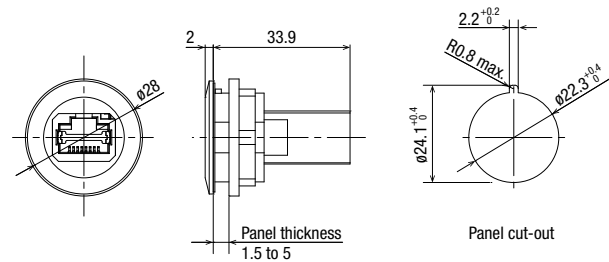
| Name / Shape | Material | Color | Part No. | Protection Degree |
|---|---|-------------|------------------|-------------------|
|  | TPE | Black | CW9Z-D1X1 | IP65/67 |
|  | [Lens] Polycarbonate [Main body] Polyamide [Gasket] NBR | Translucent | CW9Z-D1X2 | IP65/67 |

Note 1) Accessories can only be used for CW series ports (CW1X / CW4X).
Note 2) For the instruction sheet, read the QR code.



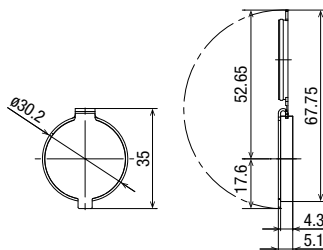
All dimensions in mm.

RJ45

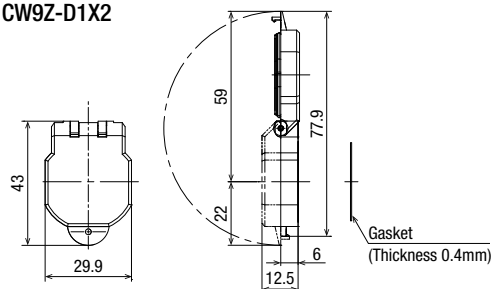


Dimensions for Accessories

Rubber cap CW9Z-D1X1



Plastic cover CW9Z-D1X2






• Panel thickness when CW9Z-D1X1/D1X2 is mounted: 1.5 to 5 mm

Recommended for use with the following products:

Flush Silhouette Switches

Flush Silhouette Switches

| | | |
|---|--|--|
| LB/LBW  18.2, 22.3, 18.2, 22.5, 18.2x24.2 | LW  25.3, 24.5 | CW  22 |
|---|--|--|

LB series: Slim 2mm-thick bezels for stylish panels.
LBW series: Projects only 2mm from the panel. Smart appearance with large surface for secure operation.



Create stylish panel with flush bezels projecting only 2.0 mm from panel front. Easy to install/remove, and ideal for panels that require cleanliness and safety.

Flush bezel projecting only 2.5 mm from panel front, with short, 39.9 mm depth behind the panel. Third-generation safety structure.

APEM Products



Pushbuttons

| | |
|--|--|
| IA  16 | AV  22, 30 |
|--|--|

The actuator consists of a polyurethane membrane which depresses when the switch is actuated. (IP67)

Withstands any aggressive use. Resistant to demanding environmental requirements (rain, frost, salt, UV), and to vandalism.

Operator Interface

HG

| | | |
|-----------|----------|---|
| 15 inch | 8.4 inch |  |
| 12.1 inch | 5.7 inch | |
| 10.4 inch | 4.3 inch | |

Excellent visibility by super-bright LED backlight. Withstands harsh environments, and suitable for use in a wide temperature range from cold to hot environment.

IDEC CORPORATION

www.idec.com

Head Office

6-64, Nishi-Miyahara-2-Chome, Yodogawa-ku, Osaka 532-0004, Japan

| | | | |
|------------------|-------------------------------|--------------------------|----------------------|
| USA | IDEC Corporation | Tel: +1-408-747-0550 | opencontact@idec.com |
| Germany | APEM GmbH | Tel: +49-40-25 30 54 - 0 | service@eu.idec.com |
| Singapore | IDEC Izumi Asia Pte. Ltd. | Tel: +65-6746-1155 | info@sg.idec.com |
| Thailand | IDEC Asia (Thailand) Co., Ltd | Tel: +66-2-392-9765 | sales@th.idec.com |
| Australia | IDEC Australia Pty. Ltd. | Tel: +61-3-8523-5900 | sales@au.idec.com |
| Taiwan | IDEC Taiwan Corporation | Tel: +886-2-2577-6938 | service@tw.idec.com |

| | | | |
|-----------------------|-----------------------------|------------------------|----------------------|
| Hong Kong | IDEC Izumi (H.K.) Co., Ltd. | Tel: +852-2803-8989 | info@hk.idec.com |
| China/Shanghai | IDEC (Shanghai) Corporation | Tel: +86-21-6135-1515 | idec@cn.idec.com |
| China/Shenzhen | IDEC (Shenzhen) Corporation | Tel: +86-755-8356-2977 | idec@cn.idec.com |
| China/Beijing | IDEC (Beijing) Corporation | Tel: +86-10-6581-6131 | idec@cn.idec.com |
| Japan | IDEC Corporation | Tel: +81-6-6398-2527 | marketing@idec.co.jp |

Specifications and other descriptions in this brochure are subject to change without notice.
Information in this brochure is current as of September, 2019.
2019 IDEC Corporation, All Rights Reserved.

EP1723-0

