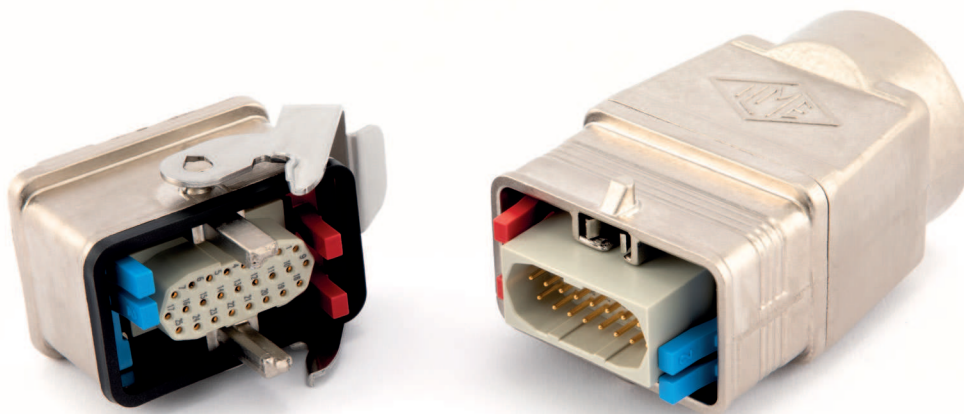

MIXO ONE ENCLOSURES

CXA - MXA SINGLE MODULE



MIXO ONE
Aluminium die-cast
 housings system,
 smart solution for single-sized
 MIXO modules



Find more
information on
our products at
www.ilme.com

TECHNICAL FEATURES

CXA - MXA

MIXO ONE is the new aluminium housings system designed by ILME to accept the wide range of MIXO series single-sized modules.

These **robust connector enclosures** (hoods and housings) transform each single MIXO module into a **completely independent** connector; the enclosures incorporate a pre-leading (first-make, last-break) PE connection terminal and contact, for the safest connector operation.

Key features:

- **aluminium** die cast alloy, **nickel** plated;
- rigid **stainless steel locking lever**;
- **hoods split in two parts (front, rear)**, to simplify the PE connection. Supplied with four self-threading screws and sealing gasket;
- four optional **coding pins** for up to **16 different codings**, as a provision against mismatching when identical connectors are installed side by side;
- **protection covers** for hoods and housings made in shock-proof thermoplastic material, either **with pegs** (for enclosures with locking lever and sealing gasket) or with **locking lever and sealing gasket** (for enclosures with pegs) both with eyelet-terminated string (for fastening to housings) or with loop-terminated cord (for fastening to hoods, around the incoming cable).

robust and compact design for a new modules concept



bulkhead mounting housing with single lever



AVAILABLE SEPTEMBER 2019

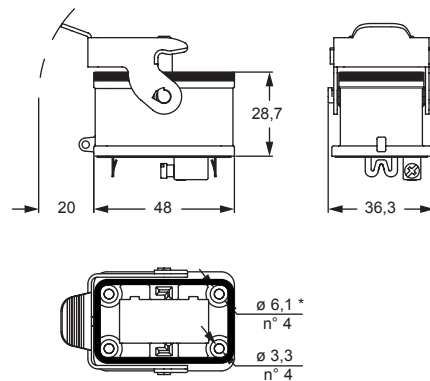
hoods with 2 pegs



AVAILABLE SEPTEMBER 2019

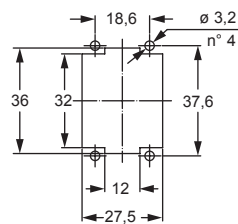
description	part No.	part No.	entry M
with lever	CXA 01 I		
with pegs, side entry (in 2 parts)		MXA 01 O25	25
with pegs, top entry (in 2 parts)		MXA 01 V25	25
with pegs, top entry (in 2 parts)		MXA 01 V32	32

CXA I

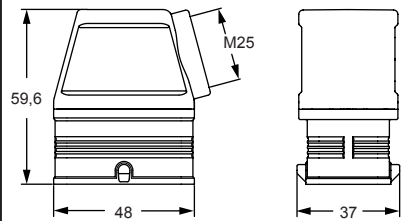


* for M3 fixing screws (not supplied) with maximum 6 mm head diameter

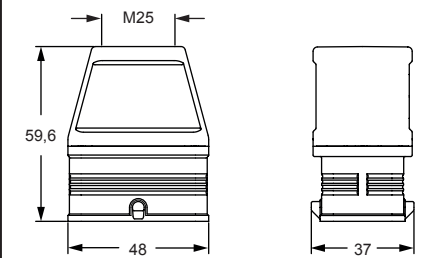
panel cut-out for bulkhead mounting housings



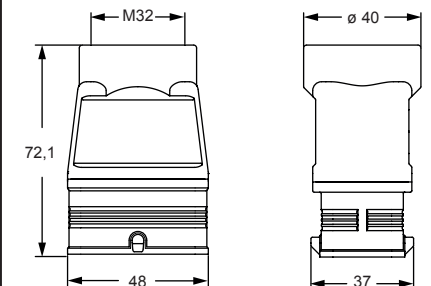
MXA 025



MXA V25



MXA V32

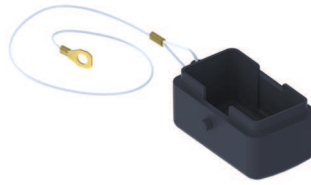


cURus
Type 4/4X/12 pending



according to IEC/EN 60529

plastic covers



AVAILABLE SEPTEMBER 2019

plastic covers with lever and gasket



AVAILABLE SEPTEMBER 2019

description

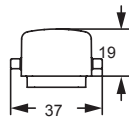
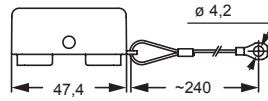
part No.
(with eyelet)

part No.
(with loop)

with 2 pegs (for enclosures with 1 lever with gasket)
with 1 lever and gasket (for hoods with 2 pegs)

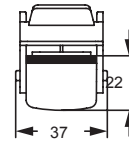
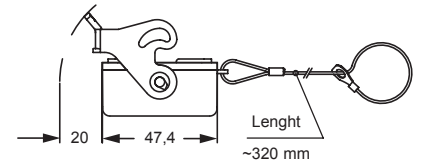
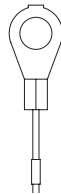
CXP 01 C

CXP 01 CLG



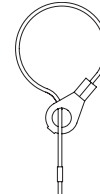
For fixing on housings

eyelet



For fixing on hoods

loop



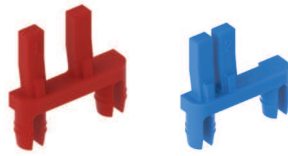
cURus
Type 4/4X/12 pending



according to IEC/EN 60529

CR CX coding pins

coding pins



AVAILABLE SEPTEMBER 2019

coding pins



AVAILABLE SEPTEMBER 2019

description

part No.

part No.

red coding pin (#1)

CR CX01R

blue coding pin (#2)

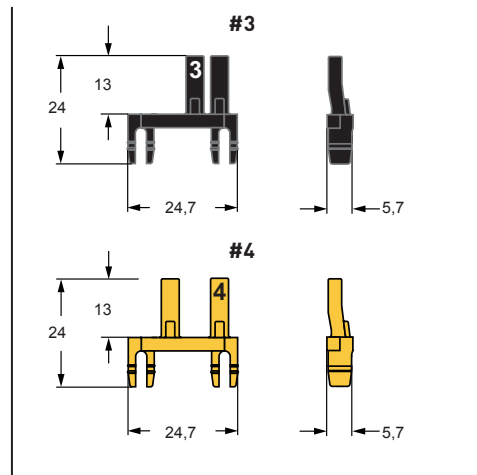
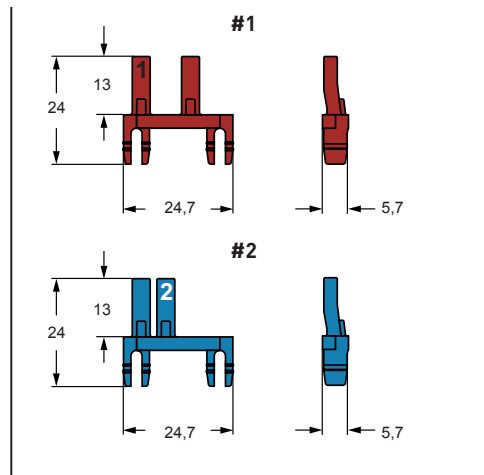
CR CX01B

yellow coding pin (#3)

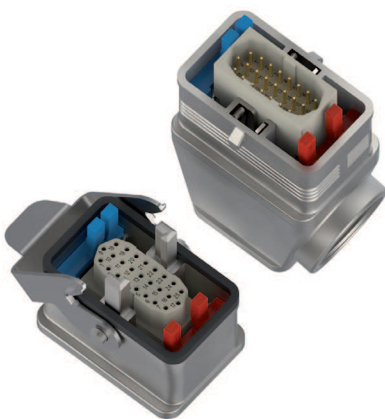
CR CX01G

black coding pin (#4)

CR CX01N



CR CX01 CODING OPTIONS

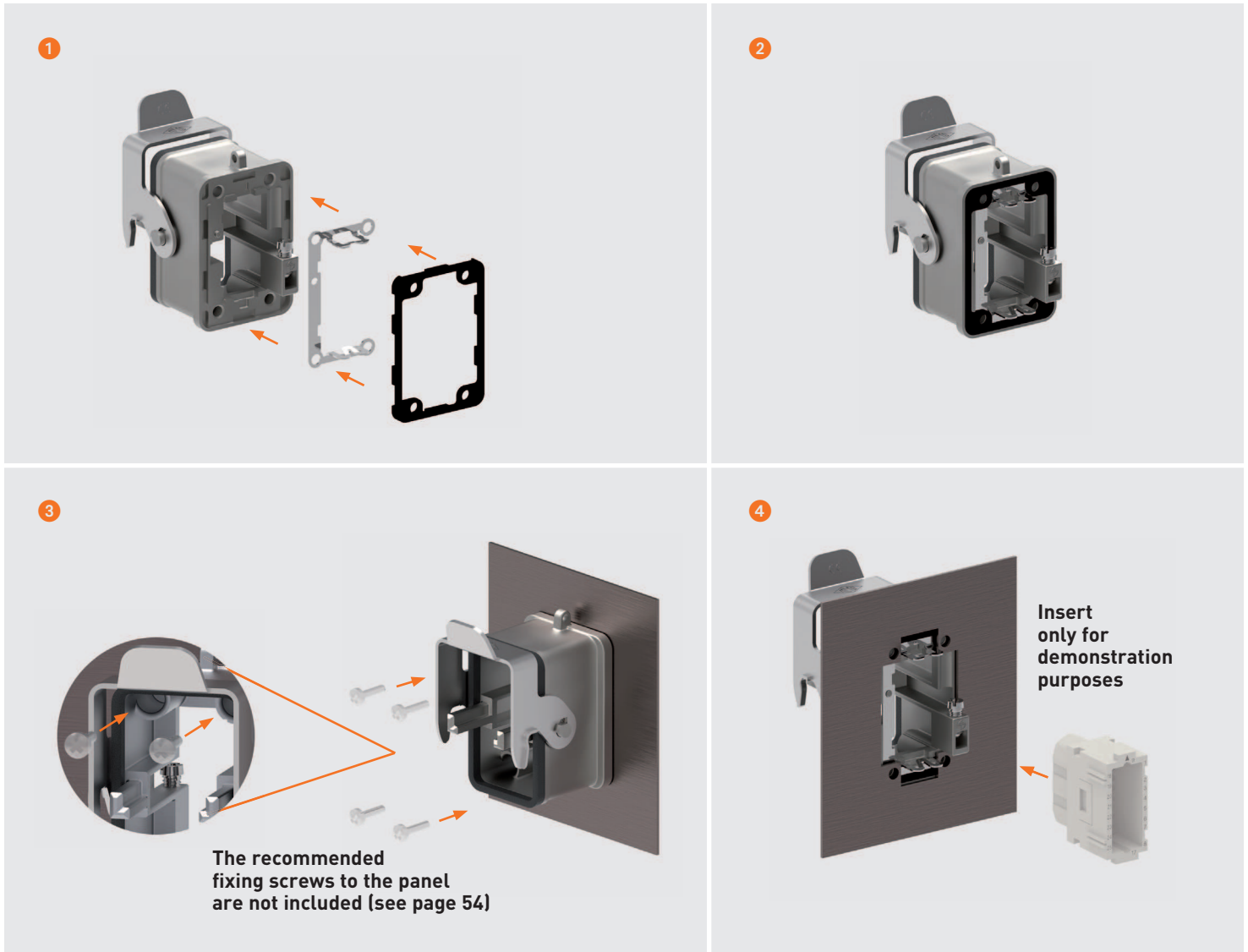


Example of coding option 6 of 16 different codings possible (4 coding pins per each connector coupling)



ASSEMBLY INSTRUCTIONS

MIXO ONE BULKHEAD HOUSING



MIXO ONE HOODS

