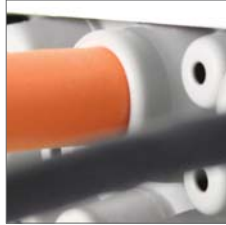


KEL-DPU 24

Heavy-duty cable entry plates with high strain relief



Membrane on front

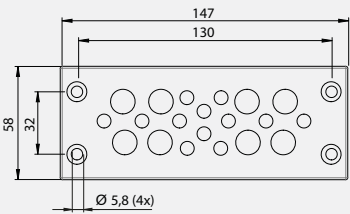
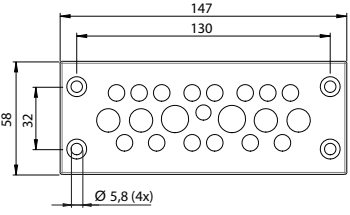
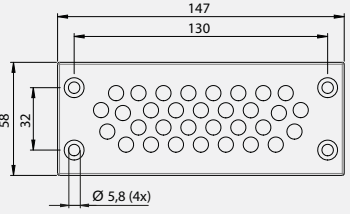


Conical shape on back provides additional sealing and strain relief



Resistant against industrial detergents (ECOLAB certified)



Description	Type	Order No.	Number of cables	PU
	KEL-DPU 24 20	<ul style="list-style-type: none"> ■ 43938 ■ 50938 	<ul style="list-style-type: none"> 12× 3.2 - 5.5 mm 8× 5 - 10.5 mm 	10
	KEL-DPU 24 21	<ul style="list-style-type: none"> ■ 43930 ■ 50930 	<ul style="list-style-type: none"> 1× 3.2 - 6.3 mm 14× 4 - 7.5 mm 4× 5.5 - 10.5 mm 2× 8 - 12.5 mm 	10
	KEL-DPU 24 32	<ul style="list-style-type: none"> ■ 43942 ■ 50942 	32× 3.2 - 6.3 mm	10

* Only valid for grey product types | ** IP68 only when screw mounted

Advantages & benefits

- Snap or screw mounting possible
- High strength & stability
- High strain relief
- Fast and easy assembly
- High cable density
- Dual cable sealing with IP66/IP68**/up to UL type 4X
- Hygienic design - free of dirt-collecting recesses

2.1

Specifications

Material	Frame: Polypropylene (PP) Sealing plate: Elastomer
Colour	■ grey (similar RAL 7035) ■ black
Flame class	UL94-Vo, self-extinguishing
IP rating	IP66/IP67/IP68 (certified acc. to EN 60529)
UL type rating	UL type 12 (acc. to UL 50E) UL type 4X (acc. to UL 50E)
Temperature Properties	- 40°C to + 90°C (static) Halogen-free, silicone-free
Cut-out dimensions	36 × 112 mm / page 218 - 219
Plate depth	14 mm
For wall thickness (snap-in mounting)	1.5 - 2 mm

Accessories

ST-B Plugs	85
KEL-EMC-PF Cable collectors	139
FP Flanged plates	178 - 183